

General Overview

Key Findings:

- A total of **38,183 IDP arrivals** were reported to **147 assessed communities** in Aleppo, Hama and Idlib governorates between 25 and 31 March 2018.
- IDPs most commonly arrived to communities in **Ma'arrat An Nu'man (5,156)**, **Dana (5,060)**, **Ariha (4,482)**, **Kafr Nobol (2,681)** and **Maaret Tamsrin (2,665)** sub-districts in Idlib governorate.
- The vast majority of reported arrivals (97%) were displaced from **Arbin in Eastern Ghouta**.

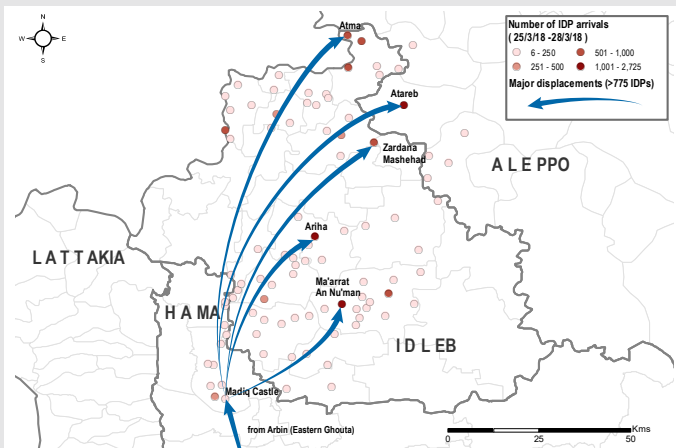
Major Developments

Weeks of intensification of conflict in Eastern Ghouta, east of Damascus, have triggered the displacement of tens of thousands of people from the area. While many have been displaced to collective shelters in Rural Damascus, thousands have been evacuated to opposition-held areas in the north-west of the country. The most recent wave of arrivals to north-western Syria began with evacuations from Al-Qadam neighbourhood in Damascus between 14 and 15 March and continued with evacuations from Harasta in Eastern Ghouta, mostly between 23 and 24 March. The number of evacuees increased in the following days with a large number of departures from Arbin in Eastern Ghouta since 25 March. While many residents have already left Eastern Ghouta, about 70,000 residents were still estimated to remain in Duma, the largest urban area in Eastern Ghouta.¹

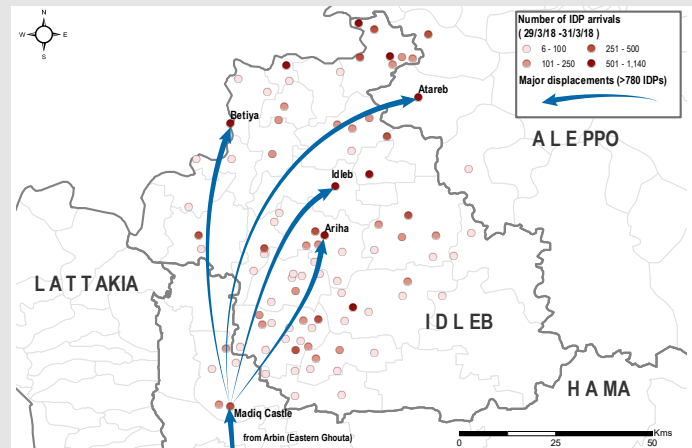
¹ UN Office for the Coordination of Humanitarian Affairs, [Turkey | Syria: Situation in North-western Syria, Situation Report No.1](#), 29 March 2018

Major IDP Movements to Assessed Communities in North-west Syria

25 - 28 March 2018



29 - 31 March 2018



About ISMI & This Factsheet

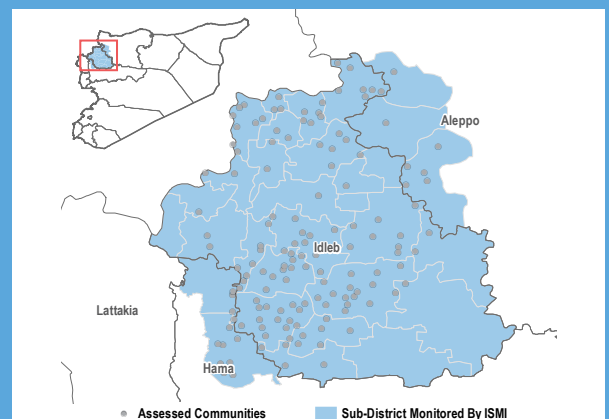
The IDP Situation Monitoring Initiative (ISMI) is an initiative of the Camp Coordination and Camp Management (CCCM) Cluster, implemented by REACH and supported by cluster members.

Following a baseline assessment conducted at the end of 2016, weekly/bi-weekly data collection cycles were initiated. In order to provide timely updates to member organisations of the CCCM Cluster, REACH also conducts ad hoc assessments of IDP movements to address immediate information gaps during large waves of displacement. This factsheet presents an overview of reported inward and outward movements of IDPs in Aleppo, Hama and Idlib governorates from 25 to 31 March 2018. Such displacements were reported in 147 communities in 27 sub-districts monitored by ISMI. Data was collected in two data collection cycles covering the previous 96 and 72 hours respectively. The coverage map in this section shows the sub-districts that were monitored for this ad hoc data collection, as well as the communities reporting movements.

Displacements are identified through an extensive key informant (KI) network, either from alerts initiated by KIs or from follow-up by enumerators. At least two KIs are interviewed in each assessed community, and collected information is further triangulated through other sources, including CCCM member data and humanitarian updates. This approach allows for regular updates on IDP movements at the community level across sub-districts monitored by ISMI in northwest Syria.

Disclaimer: The data used for this product was collected, triangulated and verified based on submissions from ISMI's network and select CCCM cluster members following the ISMI methodology. Due to differences in methodology and coverage, figures presented in this output may differ from official CCCM Cluster or UNHCR data. All data is for humanitarian use only.

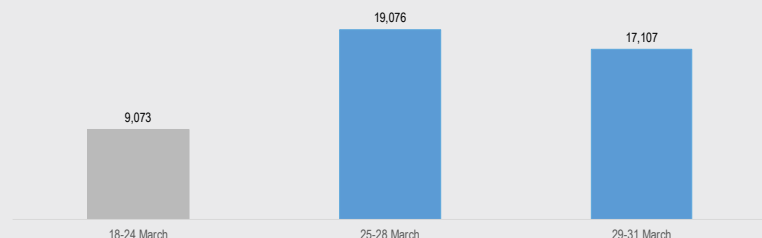
Coverage, 25 - 31 March 2018



Feedback: CCCM Cluster Northern Syria · Email: syria.cross.border.info@ccmcluster.org · Info: www.globalccmcluster.org, www.humanitarianresponse.info

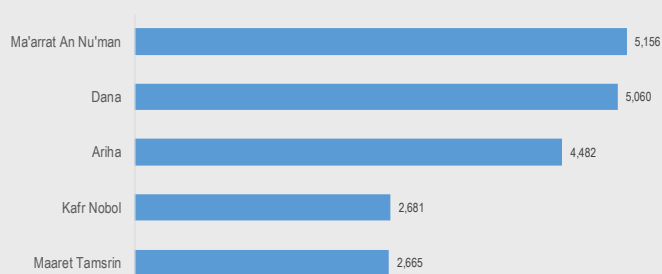
IDP Arrival Patterns

Total number of IDP arrivals²



The number of IDP arrivals to assessed communities in north-western Syria increased significantly in the second half of March compared to previous weeks. From 25 to 28 March, **19,076 arrivals were reported to 94 assessed communities in Idlib, Aleppo and Hama governorates**. In only four days, more than twice the number of IDP arrivals were reported to assessed communities than in the previous seven days, when evacuees from Eastern Ghouta had begun to arrive to north-western Syria. From 29 to 31 March, a further **17,107 IDP arrivals were reported to 93 assessed communities**.

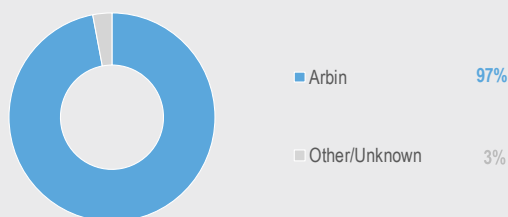
Sub-districts reporting largest numbers of arrivals



IDPs most commonly arrived to communities in **Ma'arrat An Nu'man (5,156), Dana (5,060), Ariha (4,482), Kafr Nobol (2,681) and Maaret Tamsrin (2,665)** sub-districts in Idlib governorate. At the community level, the largest number of IDP arrivals were reported to **Ariha (3,306), Ma'arrat An Nu'man (3,238), Atareb (1,710), Betsiya (1,710) and Atmeh (1,459)**.

Prior to the new arrivals from Eastern Ghouta during the coverage period, the 147 assessed communities in Aleppo, Hama and Idlib governorate were already hosting more than 879,500 IDPs.³ With the new IDP arrivals, this number increased to 915,709 IDPs.

Last places of departure of arrivals



During the 7-day coverage period, **the vast majority (97%) of IDPs arrived from Arbin in Eastern Ghouta**. The remaining 3% arrived from other locations in opposition-held areas in north-western Syria, with many of them being secondary displacements of recent IDP arrivals from Eastern Ghouta.

These arrivals are part of a larger wave of evacuations from Eastern Ghouta. In the previous week, IDPs had most commonly arrived from Harasta and Al-Qadam communities. A large number of residents are still remaining in Duma city. According to key informants, evacuations from this area began on 2 April.

IDP Priority Needs

Number of communities reporting priority needs

	1st	2nd	3rd
Education			8
Food	33	74	56
Health	29	22	26
Hygiene	1	3	9
NFIs	45	68	55
Safety and security	5	2	5
Shelter	74	18	23
Water			3

As many communities in Idlib and Aleppo governorates had already witnessed a large number of arrivals from other communities in north-western Syria, many of these new IDP arrivals from Eastern Ghouta are now being hosted by already overburdened communities, camps and informal settlements. Moreover, reception sites and transit centres are reported to have reached their full capacity.⁴

As a result of the large number of arrivals in a short amount of time, many IDPs are in need of the most basic goods and services. Most commonly, key informants reported **shelter as the primary need of new IDP arrivals** in assessed communities. The other most commonly reported priority needs of IDP arrivals from Eastern Ghouta were **food, non-food items and healthcare**.

² This graph includes information on data collected in a previous ad hoc assessment cycle, covering IDP movements, including mostly evacuations from Eastern Ghouta, between 18 and 24 March 2018.

³ This figure is a calculation based on IDP population data as of the last day of this coverage period and IDP arrival and IDP departure numbers during the previous seven days.

⁴ UN Office for the Coordination of Humanitarian Affairs, [Turkey | Syria: Situation in North-western Syria, Situation Report No.1](#), 29 March 2018