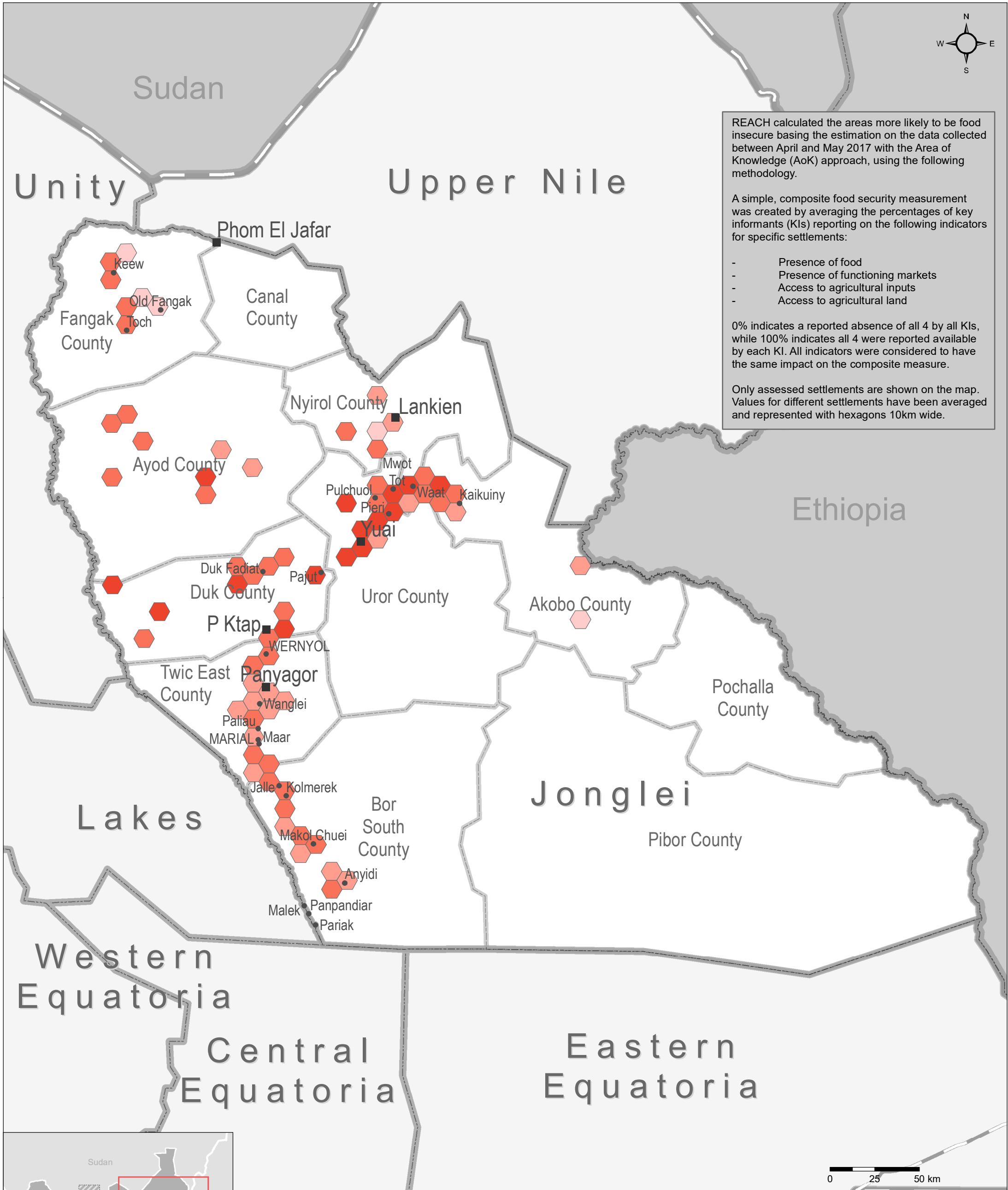


Jonglei State - COMPOSITE FOOD SECURITY INDICATOR



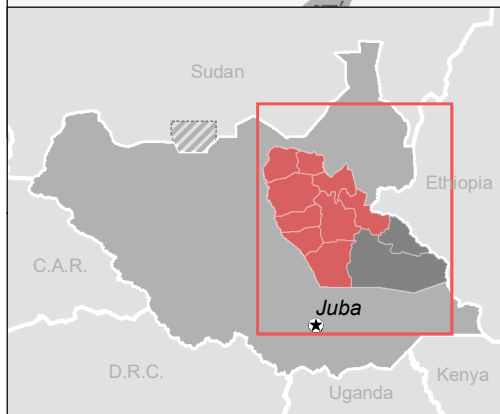
REACH calculated the areas more likely to be food insecure basing the estimation on the data collected between April and May 2017 with the Area of Knowledge (AoK) approach, using the following methodology.


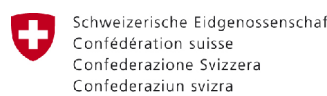
A simple, composite food security measurement was created by averaging the percentages of key informants (KIs) reporting on the following indicators for specific settlements:

- Presence of food
- Presence of functioning markets
- Access to agricultural inputs
- Access to agricultural land

0% indicates a reported absence of all 4 by all KIs, while 100% indicates all 4 were reported available by each KI. All indicators were considered to have the same impact on the composite measure.

Only assessed settlements are shown on the map. Values for different settlements have been averaged and represented with hexagons 10km wide.



<p>Settlements assessed</p> <ul style="list-style-type: none"> ■ State capital ■ County capital ● Principal town • Village 	<p>Boundaries</p> <ul style="list-style-type: none"> □ International □ County □ State ▨ Disputed area — Undetermined 	<p>Composite indicators</p> <ul style="list-style-type: none"> □ 0.81 - 1 □ 0.61 - 0.8 □ 0.41 - 0.6 □ 0.21 - 0.4 ■ 0 - 0.2 	 <p>FROM THE AMERICAN PEOPLE</p>  <p>Schweizerische Eidgenossenschaft Confédération suisse Confederazione Svizzera Confederaziun svizra</p> <p>Swiss Agency for Development and Cooperation SDC</p>
---	--	--	---

Data sources:
Thematic indicators: REACH
Administrative boundaries: UNOCHA;
Settlements: UNOCHA;
Coordinate System: GCS WGS 1984
Contact: south.sudan@reach-initiative.org

Note: Data, designations and boundaries contained on this map are not warranted to be error-free and do not imply acceptance by the REACH partners, associates, donors or any other stakeholder

File: REACH_SSD_Map_Jonglei_CompositeFoodSecurityIndicators_June2017