



Camp profile - Kaya

Maban County, Upper Nile State, South Sudan

March 2018

Camp Coordination Johnson Opoka UNHCR
opoka@unhcr.org

Camp Management Justin Kantole DRC
cm.doro@drc-ssudan.org

Information management REACH
southsudan@reach-initiative.org

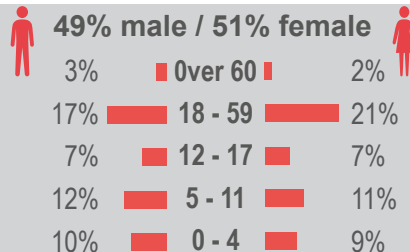
Summary

This profile provides a monthly overview of the humanitarian situation in Kaya camp, including infrastructure, WASH infrastructure, water access, and recent assessments¹. Information on standards was provided by UNHCR, based upon household nutrition surveys and operational reports. REACH collected GPS data points between 1 and 31 March to create the maps. Profiles for Doro, Gendrassa and Yusif Batil accompany this profile.

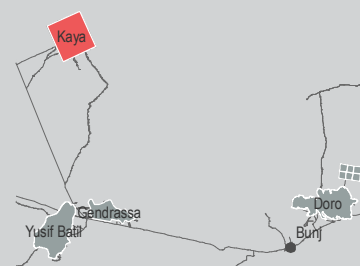
Camp overview

of individuals: 23,821
of households: 5,438
Date opened: June 2013
Camp status²: Closed
Planned capacity: 30,000

Demographics

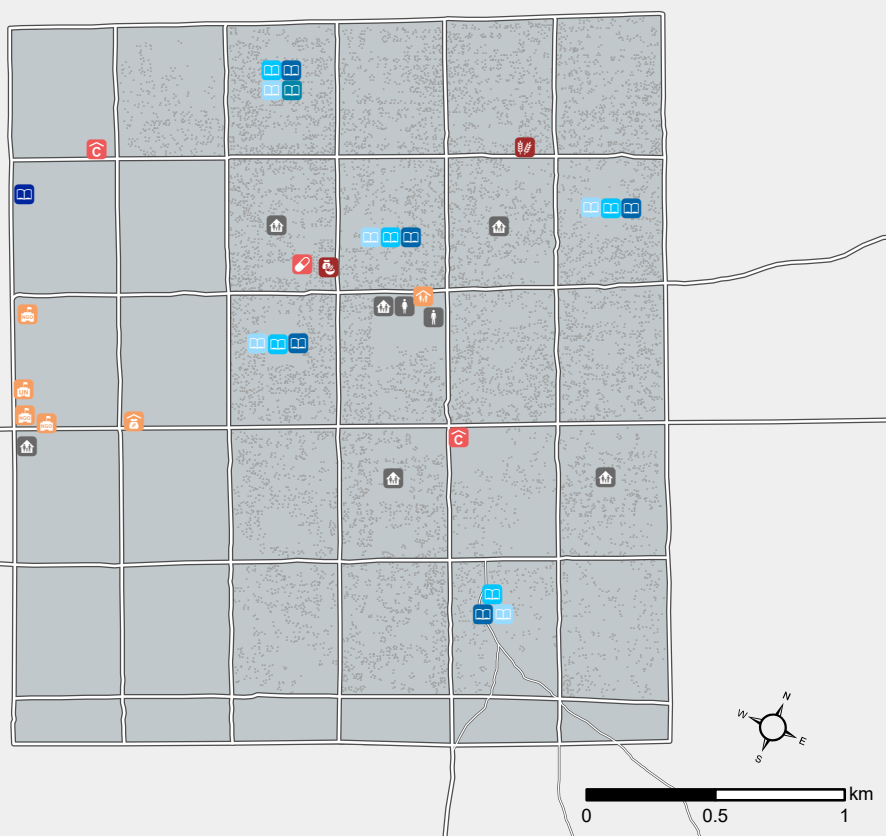
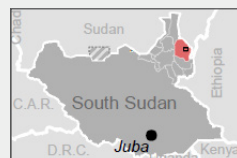


Location map



Kaya General infrastructure

Who is doing what?	
SECTOR	AGENCY
Camp Administration	CRA
Camp Coordination	UNHCR
Camp Management	DRC
Health	IMC, MENTOR
Education	SCI, LWF
WASH	ACTED
Shelter	DRC
Protection	DRC, LWF, SCI
FSL*	LWF, SCI, JRS
Food Assistance	ACTED, WFP
Nutrition	IMC
Logistics	AAH-I
Information management	REACH



Administration and security	Social facilities
UNHCR field office (1)	Market (1)
NGO Office (3)	Grinding mill (1)
Site management office (1)	Community center (6)
Warehouse (1)	Youth center (1)
Health facilities	Women center (1)
Health center (2)	
Pharmacy (1)	
Education facilities	Camp infrastructure
Nursery (5)	Shelter location (11,410) ³
Primary school (5)	Primary road
Secondary school (1)	Secondary road
AEP (5)*	Camp boundaries
Vocational training center (1)	

Sectoral minimum standards

	Target	Previous round	Current round	Achievement
Education	% of children enrolled in primary school	100%	no info	●
	% of children enrolled in secondary school	100%	no info	●
	# of pupils per teacher in primary school	<=40	no info	●
Health ⁴	Under 5 mortality rate (1,000/month)	<1.5%	0,17%	●
	Crude mortality rate (1,000/month)	<0.75%	0,04%	●
Nutrition ⁵	% of Global Acute Malnutrition (MUAC-based)	<10%	2.9%	●
	% of Severe Acute Malnutrition (MUAC-based)	<2%	0.2%	●
	Kcal per person per day	2,100	1,476	●
WASH	Litres of water per person per day	>=20	no info	●
	# of persons per latrine/ crude latrine coverage	<20	no info	●
Shelter	% of households living in family emergency shelter	100%	no info	●
	% of households living in family semi-permanent structure	100%	no info	●
	# of SGBV cases reported (Jan-Nov 2017)	None	no info	●
Protection	# of SGBV cases supported	All	no info	●
	Total # of unaccompanied children	None	no info	●
	Total # of separated children	None	no info	●

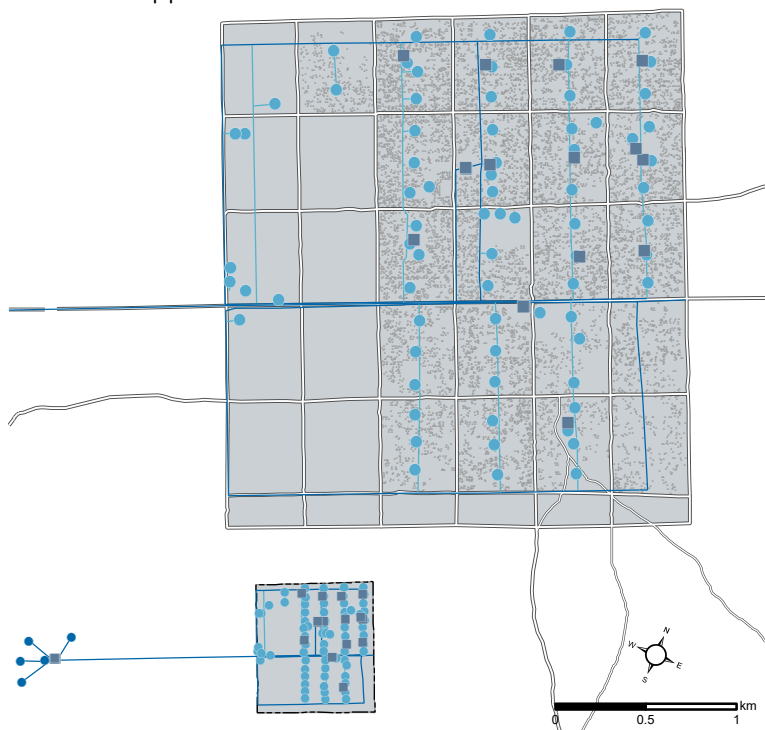
Targets based on minimum SPHERE standards agreed with UNHCR Maban ● Minimum standard reached ● More than 50% of minimum standard reached ● Less than 50% of minimum standard reached or not at all



Camp profile - Kaya

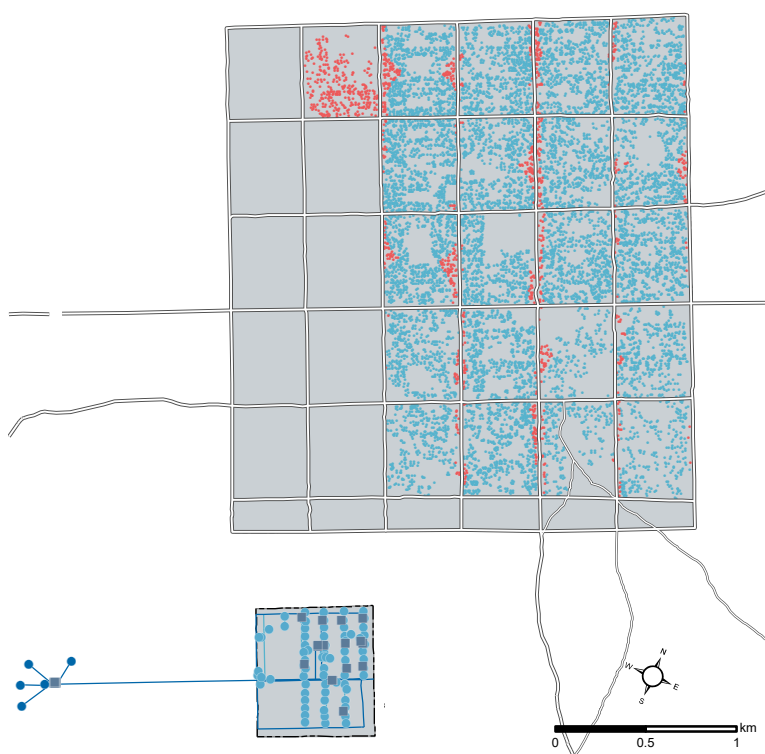
WASH infrastructure

- Water extraction - Boreholes and hand-pumps (5)
- Water storage - Tanks and bladders (16)
- Water distribution - Tapstands (74)
- Pumped pipeline
- Distribution pipeline



Water access

- Shelters situated further than 200 metres from a water point (10%)
- Shelters situated within 200 metres of a water point (90%)



Recent Assessment

Assessment: [Inter-agency Multi-Sector Needs Assessment](#)

Conducted by: UNHCR, REACH and partners

Objectives: 1) Fill critical information gaps that cut across the four refugee camps in Maban County, 2) Provide a multi-sector profile of each camp in Maban, and 3) Provide comparable and relevant quantitative and qualitative data regarding the humanitarian situation and provision of services to refugees in Maban.

Methodology: 1,553 households participated in a quantitative household survey between 30 October - 20 November 2017. The findings were triangulated with qualitative focus group discussions and key informant (KI) interviews.

Key findings:

- **Food Security and Livelihoods:** The food consumption score (FCS) was 'poor' for 28% of households across the four camps and 'borderline' for 29%.
- **Education:** On average, 26% households reported that boys and girls were not regularly attending school during the assessed period. According to a key informant (KI), lack of teaching materials and uniforms, absence of feeding programs, lack of parental support and bad quality of teaching were the most common reasons for children not attending school.
- **Protection:** The most commonly reported protection concerns were family separation for both women and men (24% and 21%), child labour for boys (29%) and early or forced marriage for girls (42%).
- **Camp Management:** 70% of households reported knowing of the existence of sectoral committees in the camp, 58% reported being aware of monthly meetings with sectoral committees and camp management, and 57% reported knowing of the existence of regular meetings between sectoral committee members and camp residents.
- **WASH:** Clean water was reportedly available to almost all refugees living in the four camps with 74% of households reporting spending less than 30 minutes to collect water from the nearest tapstand.
- **Shelter:** The most commonly observed type of shelter in the four camps was transitional (33%), followed by tukul (29%) and emergency shelter (20%).
- **Environment:** Assessed households from the camps reported a high dependence on natural resources around the camps, such as wood for fuel.

*Key Acronyms

Food Security and Livelihoods (FSL)
Accelerated Education Programme (AEP)

Notes

1. Recent assessments include those conducted since the last camp profile
2. Since May 2017, new arrivals will be located in Doro camp
3. Shelter analysis provided by UNOSAT (24/04/2017)
4. Reported data from UNHCR Health and Nutrition Unit, Maban
5. Reported data from UNHCR Health and Nutrition Unit, Maban