



Nyal Port Monitoring

Panyijiar County, Unity State, South Sudan

CONTEXT AND METHODOLOGY

Nyal Town is located in Northern Panyijiar County, Unity State, along the banks of the Sudd, the third largest swamp in the world. Since the beginning of the crisis, IDPs from Unity and Jonglei states have perceived Nyal as a safe location with ample resources. Recently, Nyal has also become a key location for people traveling to and from nearby islands.

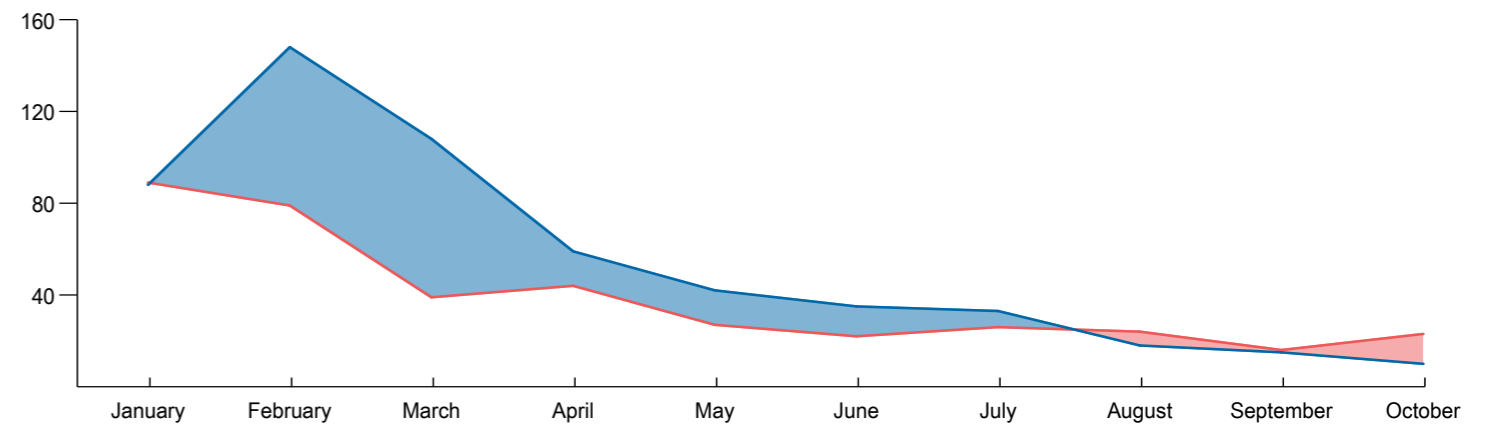
Since 1 November 2016, REACH has monitored three ports in Nyal - Gap Port, Nyal Port and Ketieth Port - to record the arrivals and departures on a daily basis. The information gathered covers household demographics, key push and pull factors, health concerns, vulnerable populations, and general transportation routes.

REACH port monitors collected information from 7:30am - 6:30pm Monday through Friday to ensure complete coverage of Nyal's three ports. REACH teams attempt to interview all arrivals and departures at the household level using a contextualized survey. However, please note that the data presented here is not representative, rather indicative of movement trends for the assessed population. Daily data was synthesized to provide evidence for more effective humanitarian planning. The following is based on 71 departure and 25 arrival households recorded from 1 to 31 October 2017.



GENERAL MOVEMENT TRENDS¹

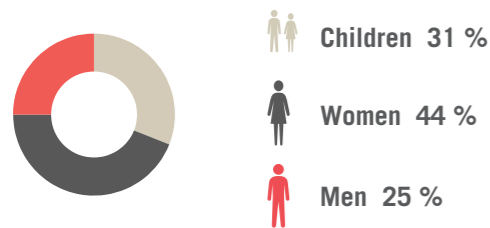
Average daily number of individuals departing (red) and arriving (blue); January 2017 to October 2017.



DEPARTURES FROM NYAL

Demographic²

86% of the total departing respondents intended to leave Nyal for 6 months or less.



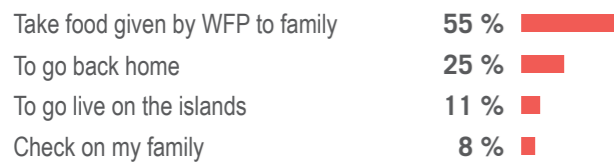
Intended duration of stay in destination

Reported length of time that IDPs intend to stay in the location that they are departing for:



Reason for leaving

Primary reported reason for leaving Nyal Town:



Changes in reason for leaving

Most prevalent primary reason for leaving Nyal:

	July 2017	Aug 2017	Sept 2017	Oct 2017
Take food given by WFP to family	41 %	19 %	13 %	55 %
To go back home	16 %	30 %	34 %	25 %
To go live on the islands	19 %	15 %	27 %	11 %
To go check on family living on the islands	11 %	32 %	23 %	8 %

Intended island destinations for departures

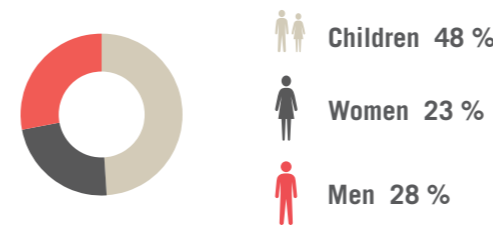
Island settlements most frequented from Nyal:



ARRIVALS TO NYAL

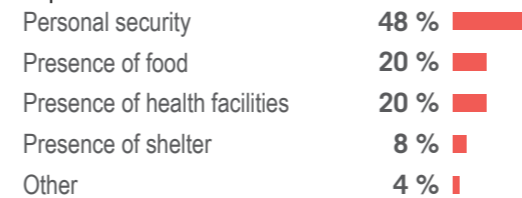
Demographic²

73% of the total arriving respondents expressed the intention to remain in Nyal for up to six months.



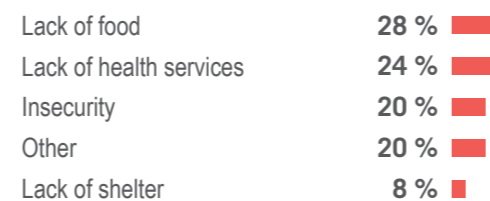
Reason for coming to Nyal

Primary reported reason for choosing to come to Nyal after being displaced:



Reason for leaving previous location

Primary reported reason for leaving previous location:



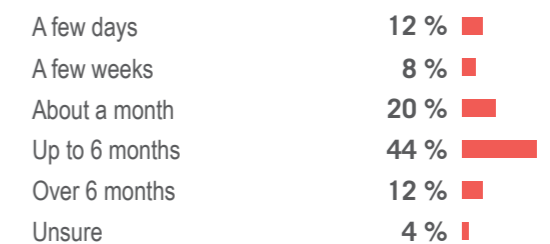
Changes in reason for coming to Nyal

Most prevalent primary reason for coming to Nyal:

	June 2017	July 2017	Aug 2017	Sept 2017
Personal security	51 %	42 %	61 %	48 %
Presence of food	9 %	3 %	9 %	20 %
Presence of health facilities	17 %	30 %	11 %	20 %
Presence of shelter	21 %	21 %	15 %	8 %

Intended duration of stay in Nyal

Reported length of time that respondents intended to stay in Nyal:



Note:

1. These are indicative trends; REACH does not record all arrivals and departures.
2. Men, women and children figures presented are percentiles of those departing / arriving.