



Nyal Port Monitoring

Panyijiar County, Unity State, South Sudan

CONTEXT AND METHODOLOGY

Nyal Town is located in Northern Panyijiar County, Unity State, along the banks of the Sudd, the third largest swamp in the world. Since the beginning of the crisis, Nyal has become a major destination for IDPs fleeing conflict in Unity and Jonglei States.

This factsheet provides results on the REACH port monitoring exercise in Nyal Town, Panyijiar County. Since 1 November 2016, REACH has monitored three ports in Nyal - Gap Port, Nyal Port and Ketieth Port - to record the arrivals and departures of South Sudanese IDPs on a daily basis. Daily data is synthesized into a monthly factsheet which provides evidence for more effective humanitarian intervention planning.

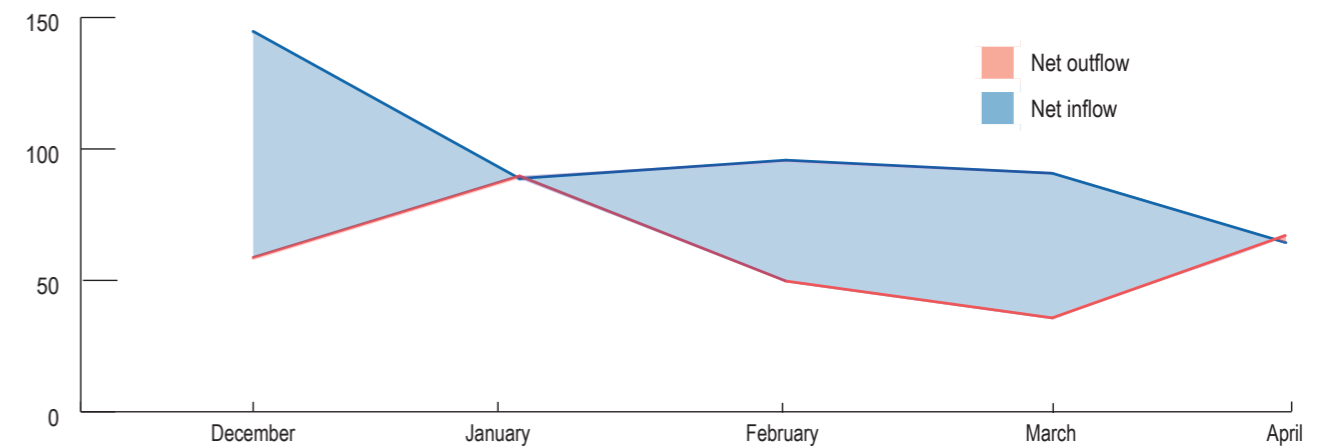
Throughout the month of April, port monitors collected information from 7:30 - 18:30 daily to ensure complete coverage of Nyal's three ports. Please note that the data presented here is not representative, rather indicative of movement trends for the assessed population. Unless specified, the following findings are based on primary data collected between 1 and 31 April 2017, during which 828 departures and 761 arrivals were recorded.

For more information visit: www.reachresourcecentre.info



GENERAL MOVEMENT TRENDS¹

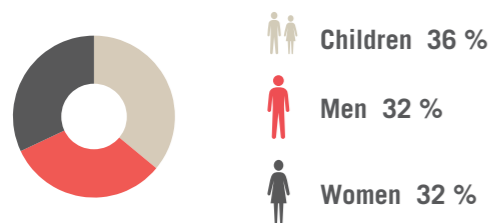
Monthly movement trends of the average daily number of individuals departing (red) and arriving (blue); December 2016 to April 2017.



DEPARTURES FROM NYAL

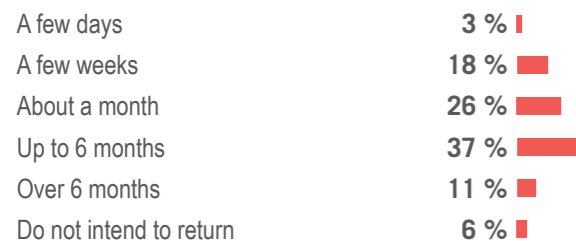
Demographic²

84% of the total departing households intended to leave Nyal for less than 6 months.



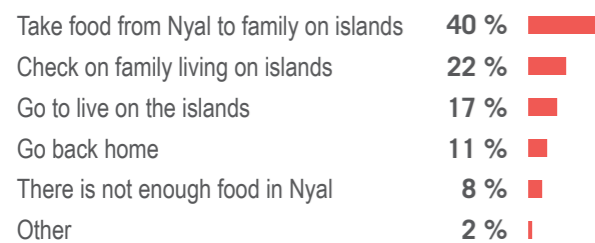
Intended duration of stay in destination

Reported length of time that IDPs intend to stay in the location that they are departing for:



Reported reasons for leaving³

Reasons for leaving Nyal Town:



Changes in reasons for leaving

Most prevalent reasons for leaving Nyal:

	Jan 2016	Feb 2017	Mar 2017	April 2017
Take food from Nyal to family living on islands	78 %	82 %	54 %	40 %
Check on family living on islands	3 %	4 %	16 %	22 %
Go to live on the islands	3 %	0 %	11 %	17 %
Go back home (outside of Nyal)	15 %	13 %	15 %	11 %

Increase in departures from Nyal

For the first time since port monitoring in Nyal town began, REACH recorded a net outflow of people in April. REACH monitoring system does not capture every arrival or departure from Nyal Town; however, quantitative data suggested and focus group discussions (FGDs) confirmed a growing number of people leaving Nyal. One of the main explanations is the combination of the depletion of Nyal's resources and the continued food distributions in Leer, Mayendit and Koch counties. According to FGDs, Nyal does not have adequate resources to handle the continuing influx of IDPs. People are seeking alternative, sometimes riskier, coping strategies, such as returning to central Unity for food distributions. Also, moving to one of the nearby islands, where wild foods are available, is a common strategy. REACH will continue to monitor the situation to gain a better understanding of the various coping mechanisms used by IDPs.

ARRIVALS TO NYAL

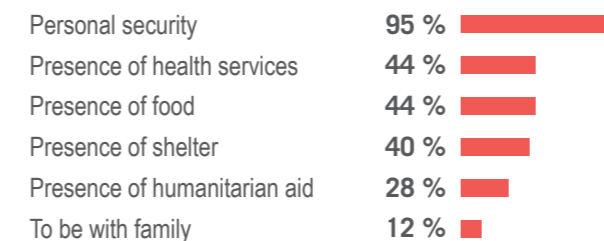
Demographic²

86% of the total arriving households expressed the intention to remain in Nyal for up to six months.



Reasons for coming to Nyal³

Top reported reasons for choosing to come to Nyal after being displaced:



Reasons for leaving previous location³

Top reported reasons for leaving previous location:



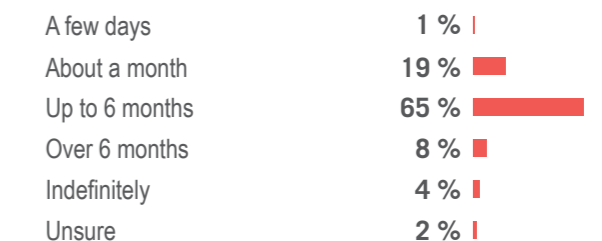
Changes in reasons for coming to Nyal³

Most prevalent reasons for coming to Nyal:

	Jan 2016	Feb 2017	Mar 2017	April 2017
Personal security	94 %	77 %	83 %	95 %
Food	73 %	61 %	45 %	44 %
Health Services	48 %	37 %	38 %	44 %
Humanitarian Services	55 %	65 %	45 %	28 %

Duration of stay in Nyal Town

Reported length of time that respondents intended to stay in Nyal Town:



Note:

- These are indicative trends; REACH does not record all arrivals and departures.
- Men, women and children figures presented are percentiles of those departing / arriving.
- Respondents were asked for their top three reasons, which were then aggregated.