



# Wau Snapshot

Wau County, Western Bahr el Ghazal State, South Sudan

## Summary

Wau protection of civilians site (PoC) was established in April 2014 following the outbreak of violence.

In the past months no new arrivals were recorded and only one household left the site.

In the PoC the situation was reported to be stable and peaceful by the camp manager.

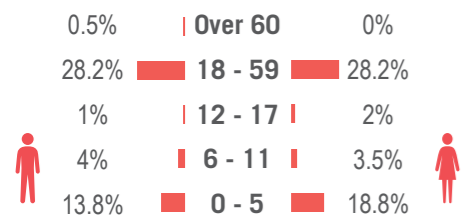
Data was provided by IOM DTM (as of 01/10/2015) and camp manager (as of 02/10/2015) spatial data was provided by REACH (as of 29/07/2015).

## Implementing Agencies

- EDUCATION** Unicef
- FOOD** WFP
- HEALTH** Vacant
- PROTECTION** UNHCR
- SHELTER / NFI** IOM, Unicef, UNHCR
- WASH** Unicef

## Demographics

47.5% male / 52.5% female\*



\* Population figure by IOM (as of 22 Oct 2015)

## Site Overview

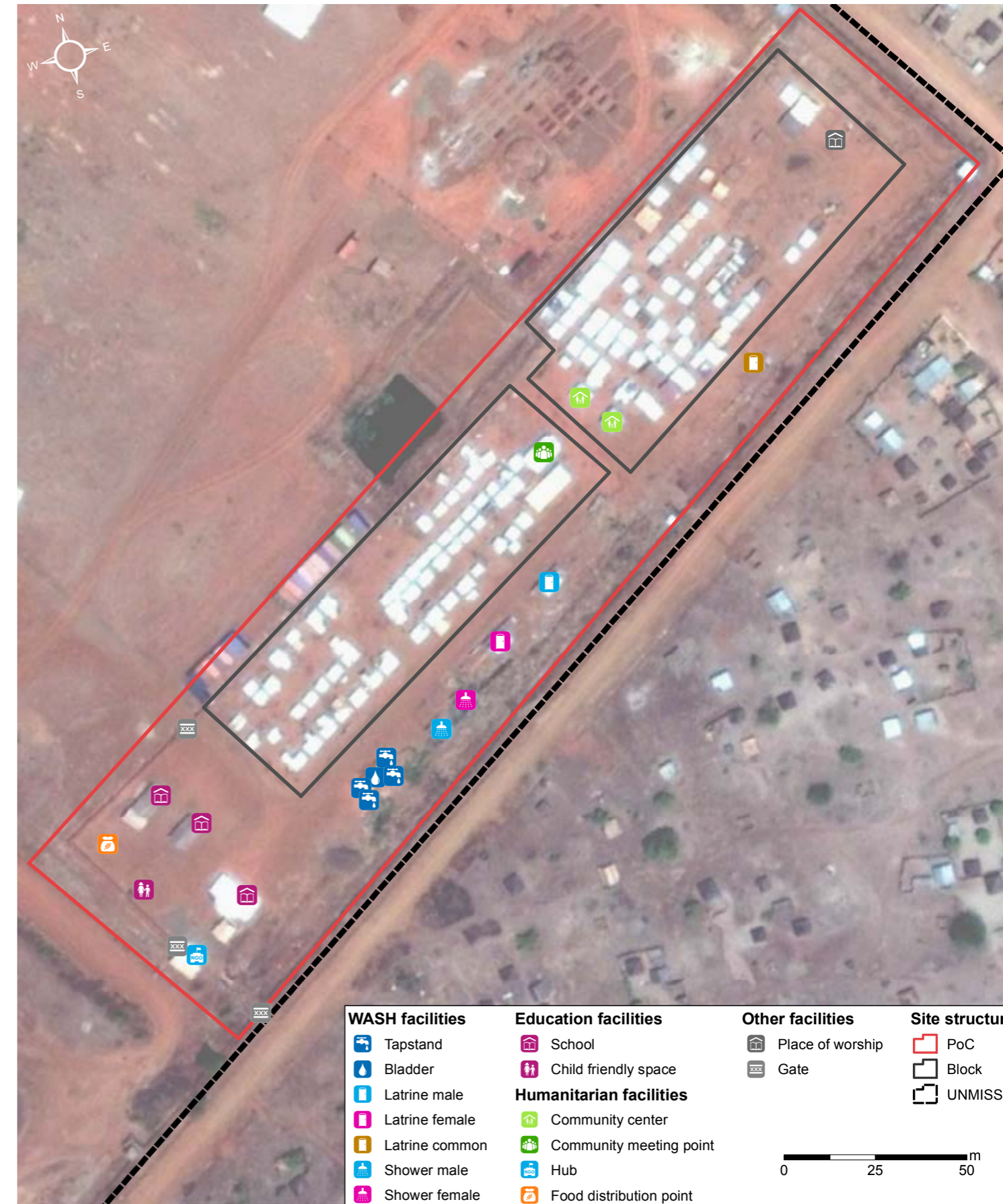
- Site management:** IOM
- Site population:** 202
- Accommodation:** 125 structures
- Planned capacity:** 413 structures
- Site area:** 9,581 m<sup>2</sup>
- IDP County of origin**
  - 1<sup>st</sup> largest group Rubkona County
  - Other large groups Not specified

## Location Map



## Wau Site Map

Lat: 7.714 Long: 27.967



## CCCM Mechanisms

The following structures are in place:

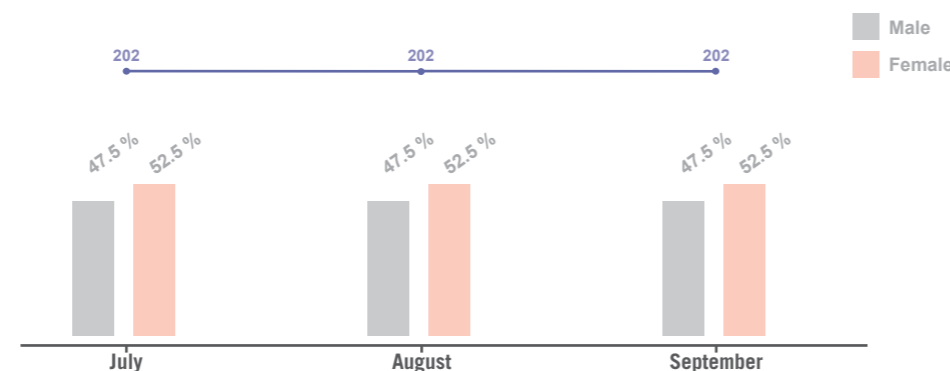
- Site management committee
- Chiefs' committee
- Women's committee (hygiene committee)
- Drainage committee

## Reported Priority Needs

Priority needs were reported and ranked by camp management as:

- Health services
- Education (text books for all grades)
- WASH and NFI

## Demographic Trends\*\*



\*\* Figure extracted from the DTM. No extra data / information was available.

## Sectoral Overview

		Target***	Achieved	
Food	Food accessible on-site	Yes	Yes	●
	Markets physically accessible from site	Yes	Yes	●
Health	Health services are available on-site or within walking distance	Yes	Yes	●
CCCM	Average open area per person	min. 30 m <sup>2</sup>	47.4 m <sup>2</sup>	●
	% of families living in rakoobas/tukul	min 75%	less than 75%	●
Shelter	% of families living in makeshift shelters	0%	0%	●
	Average number of individuals per tent	max 5	1.6	●
	Average covered area per person****	min 4.2 m <sup>2</sup>	10.8 m <sup>2</sup>	●
Water Sanitation	Liters of water available per person per day	min 15 L	more than 15 L	●
	# of persons per latrine (m/f)	max 20	101	●
	# of persons per shower (m/f)	max 20	N/A	●

\*\*\* Targets are based on minimum standards agreed with the CCCM Cluster ● Target reached, ● Target more than 50% reached, ● Target less than 50% or not at all reached. ● No data

\*\*\*\* Wau PoC shelters averagely measure 17.5 m<sup>2</sup>