



Bor Snapshot

Bor South County, Jonglei State, South Sudan

Summary

Bor protection of civilian site (PoC) site was established in December 2013 following outbreaks of violence which forced people into the UNMISS base for refuge. In September 2014 PoC was relocated to the current site.

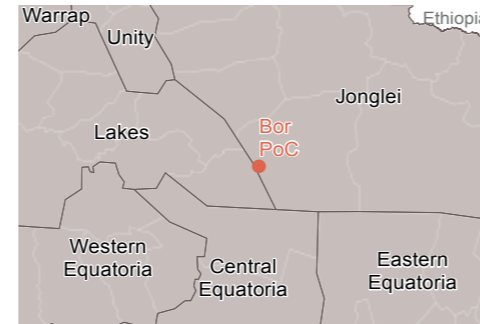
In the past months only 15 new arrivals were reported. Most of these are people coming from Juba UN House to join their families.

Data was provided by IOM DTM and camp manager (as of 01/10/2015) spatial data was provided by REACH (as of 23/01/2015).

Site Overview

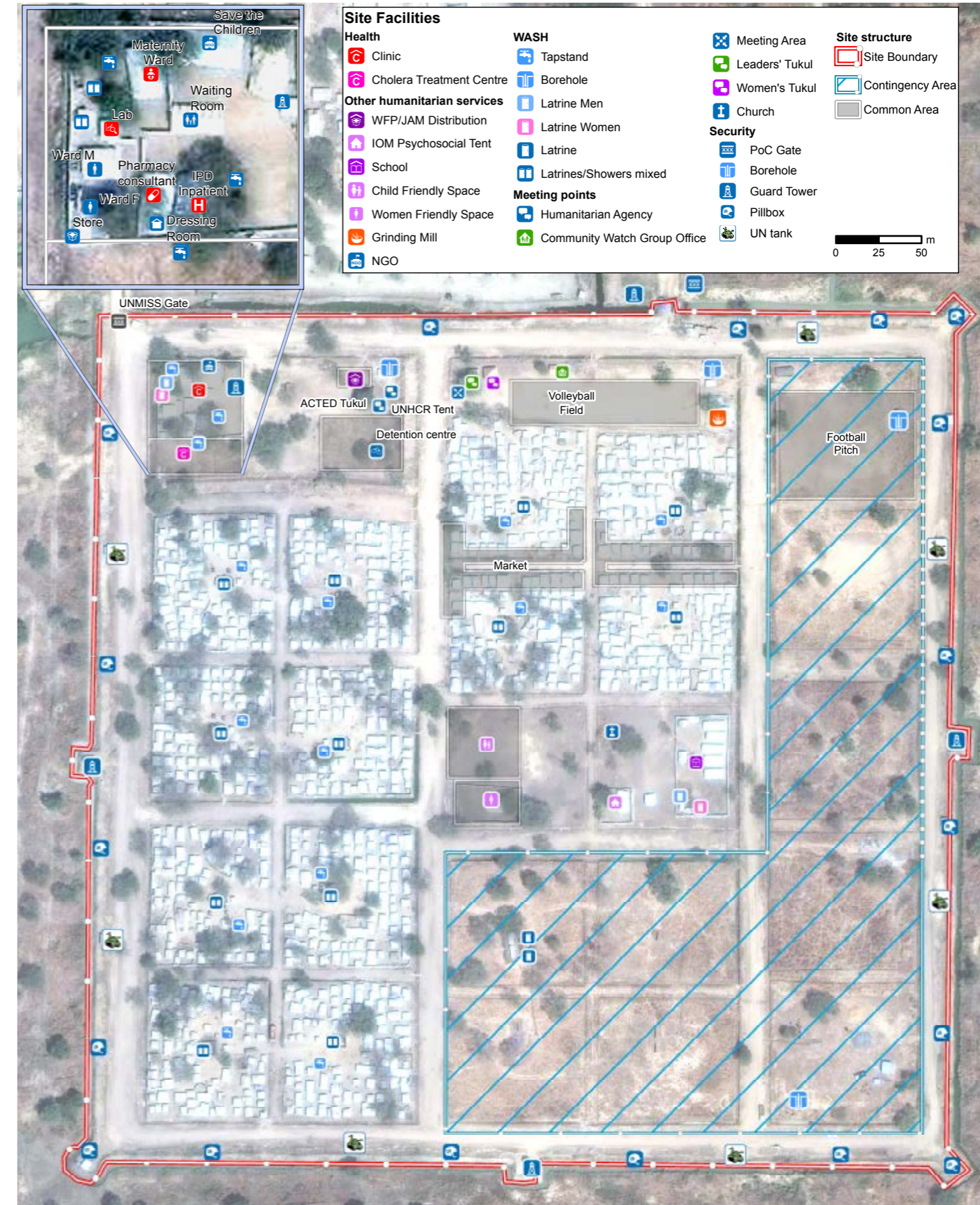
Site management: ACTED
Site population: 2,289
Accommodation: 1,085 structures
Planned capacity: 1,245 structures
Site area: 80,905 m²
IDP County of origin
1st largest group Bor South County
Other large groups Not specified

Location Map



Bor Site Map

Lat: 6.184 Long: 31.606



Implementing Agencies

- EDUCATION** INTERSOS, Unicef
- FOOD** WFP, JAM, SAADO
- HEALTH** Health Link, WHO
- PROTECTION** UNHCR (SFP), Intersos
- SHELTER / NFI** Intersos
- WASH** IAS

CCCM Mechanisms

The following structures are in place:

- Representative chairman
- Youth committee
- Women's leadership committee
- Block representatives
- Court of elders

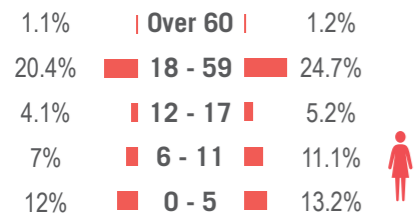
Reported Priority Needs

Priority needs were reported and ranked by camp management as:

- 1 Protection (people are leaving the PoC to collect fire wood)**
- 2 Protection (violence against women caused by increase in alcohol consumption)**
- 3 Drainages**

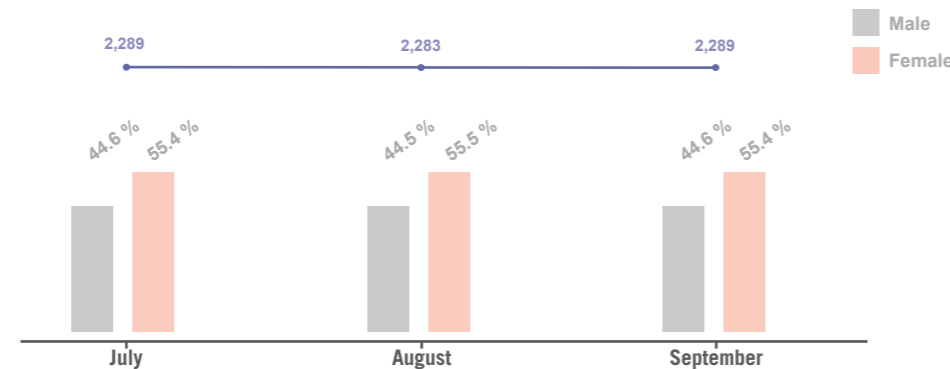
Demographics

44.6% male / 55.4% female*



* Population figure by IOM (as of 22 Oct 2015)

Demographic Trends**



** Figure extracted from the DTM. No extra data / information was available.

Sectoral Overview

Sector	Indicator	Target***	Achieved	Status
Food	Food accessible on-site	Yes	Yes	●
	Markets physically accessible from site	Yes	Yes	●
Health	Health services are available on-site or within walking distance	Yes	Yes	●
CCCM	Average open area per person	min. 30 m ²	35.3 m ²	●
	% of families living in rakoobas/tukul	min 75%	less than 75%	●
	% of families living in makeshift shelters	0%	0%	●
Shelter	Average number of individuals per tent	max 5	2.1	●
	Average covered area per person****	min 4.2 m ²	7 m ²	●
	Liters of water available per person per day	min 15 L	more than 15 L	●
Water Sanitation	# of persons per latrine (m/f)	max 20	17.2	●
	# of persons per shower (m/f)	max 20	26	●

*** Targets are based on minimum standards agreed with the CCCM Cluster ● Target reached, ● Target more than 50% reached, ● Target less than 50% or not at all reached, ● No data

**** Bor PoC shelters averagely measure 15 m²