

MULTI-CLUSTER NEEDS ASSESSMENT (MCNA)

IRAQ BRIEF 2018

CONTEXT

The Iraq Multi-Cluster Needs Assessment (MCNA) was conducted in July-September 2018 in order to support evidence-based humanitarian planning for crisis-affected populations and inform the 2019 Iraq Humanitarian Needs Overview. The MCNA was funded by OFDA, and led by the Iraq Assessment Working Group (AWG) and facilitated by REACH, in close collaboration with OCHA and the Inter-Cluster Coordination Group (ICCG).

The assessment scope and survey questionnaire were jointly developed and endorsed by AWG and ICCG, and data collection was conducted with the support of **18 partner organisations**. A total of **12,261 households** across **72 districts** in **16 governorates** were interviewed. Findings are generalizable with a 90% confidence level and 10% margin of error at the district level for each of the targeted crisis-affected population groups: out-of-camp IDP, in-camp IDP, returnee, and non-displaced households in recently retaken areas.

WHAT IS A MCNA?

Multi-Cluster Needs Assessments aim to fill information gaps in order to inform crisis-wide humanitarian planning. MCNAs provide comparable data across all relevant sectors, crisis-affected areas and population groups. Where possible and relevant, the MCNA coverage includes both accessible and hard-to-reach areas, displaced and non-displaced population groups, and any other relevant stratification. MCNAs are implemented in a joint, participative and inclusive manner. Furthermore, they are time-sensitive, with data and findings released prior to HNO and HRP discussions to generate impact. In 2018, eight MSNAs were supported by REACH and carried out thanks notably to the funding support from the global ECHO Enhanced Response Capacity funding mechanism.

KEY MCNA FINDINGS

85% Total of crisis-affected population with one or more unmet sectoral need

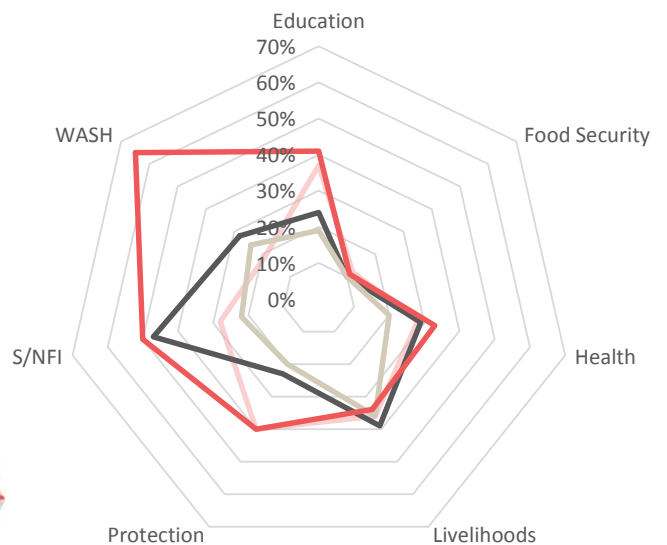
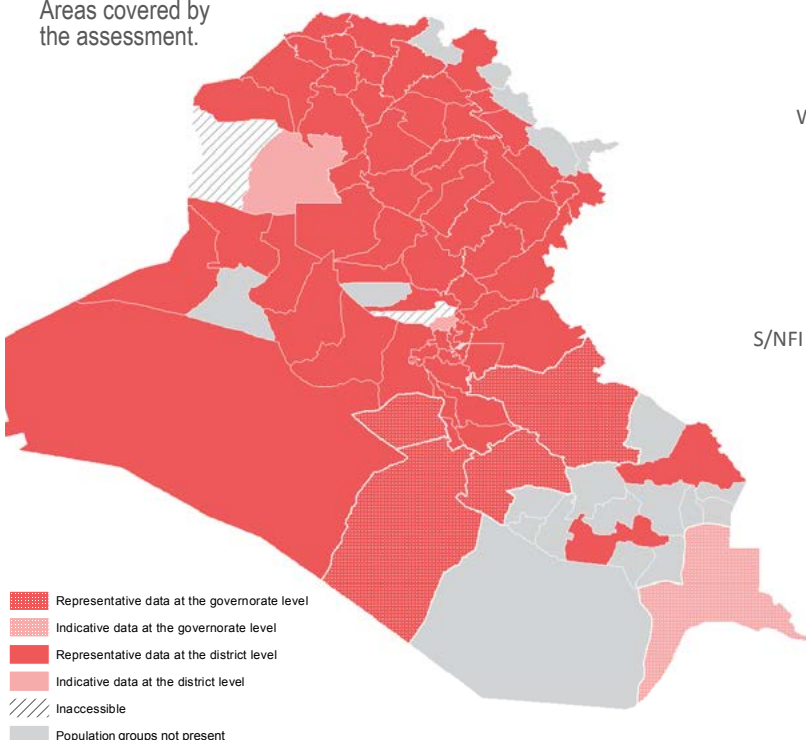
86% Returnees

74% Non-displaced households

94% In-camp IDPs

82% Out of camp IDPs

Areas covered by the assessment.



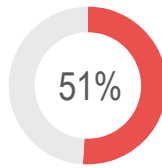
Proportion of households facing unmet humanitarian needs in each sector, by population group, based on composite indicators defined with Clusters.

- Out-of-camps IDPs
- Returnees
- Non-displaced
- In-camps IDPs

ACCESS TO EDUCATION SERVICES

Households with at least one school-aged child (6-17) not attending formal education

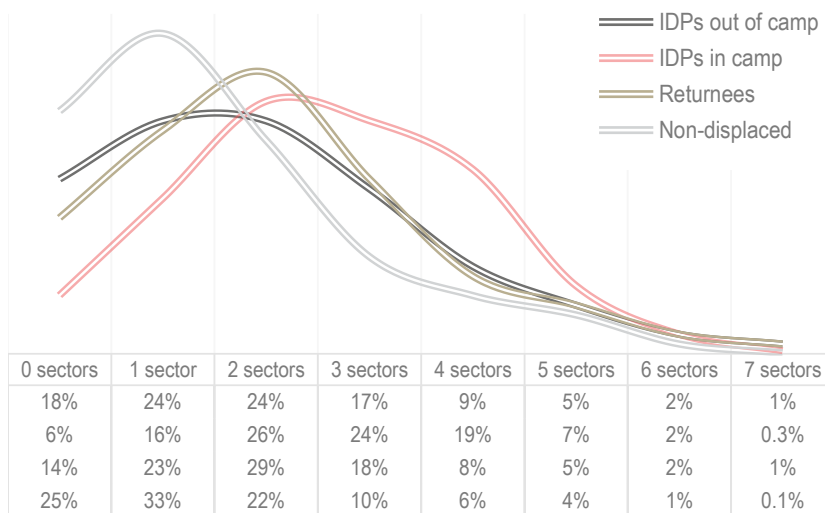
**Among the 54% of households with school-aged children*



30% of children not attending formal school dropped out after January 2014

**Among the 32% of school-aged children not currently attending*

Example findings on sectoral needs of IDPs living in camps.



SHELTER TYPE AND OCCUPANCY

Households residing in critical shelter

- Unfinished or abandoned building 6%
- Damaged building 2%
- Public or religious building 2%

86% of households reside in non-critical shelter

Priority shelter improvements*

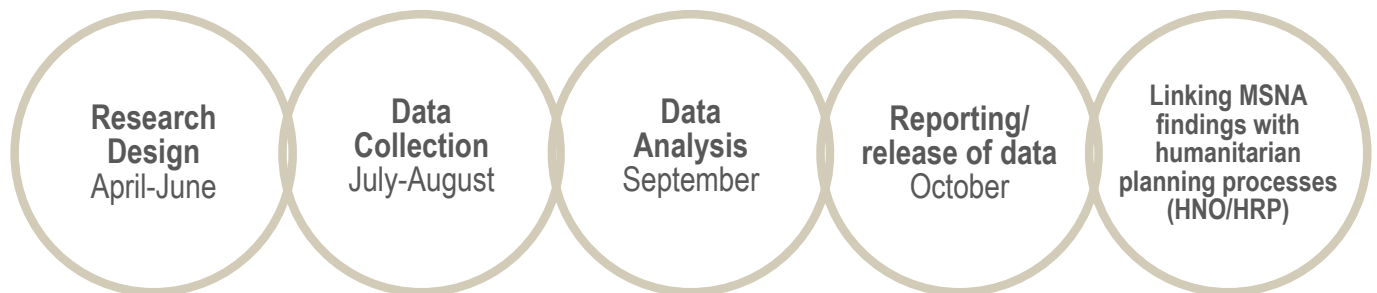
- Protection from climatic conditions 22%
- Improved basic infrastructures and utilities 17%
- None 48%

*Multiple response options could be selected

Example of findings on sectoral needs of IDPs living in out-of-camp settings.

Distribution of households categorised as being in need in multiple sectors simultaneously.

MCNA TIMELINE AND WORKFLOW



IMPACT OF MCNA FINDINGS

“ *The inter-sectoral analysis and identification of overlapping needs helped with system-wide geographic prioritisation.*
 - Cluster lead

63 References in the Humanitarian Needs Overview 2019

18 Partners involved in data collection

REACH facilitates the development of information tools and products that enhance the capacity of aid actors to make evidence-based decisions in emergency, recovery and development contexts. All REACH activities are conducted through inter-agency aid coordination mechanisms. REACH is a joint initiative of IMPACT, its sister-organisation ACTED and the United Nations Operational Satellite Applications Programme UNOSAT.

This document covers humanitarian aid activities implemented with the financial assistance of the European Union. The views expressed herein should not be taken, in any way, to reflect the official opinion of the European Union, and the European Commission is not responsible for any use that may be made of the information it contains.



IMPACT.init



reach-initiative.org



REACH_info