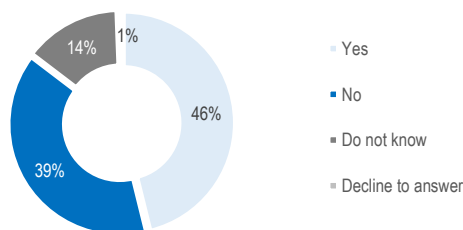


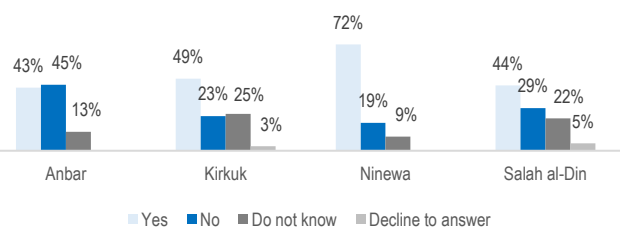
This Intentions Survey was carried out by REACH in partnership with the CCCM Cluster in **18 camps across Anbar, Baghdad, Kerbala, Najaf and Salah al-Din governorates** hosting a total of **21,851 households (104,491 individuals)**. The survey was administered to **1,587 households**, corresponding to **9,668 individuals** through a random sample¹ between 12 December 2017 and 14 January 2018.

Area of origin

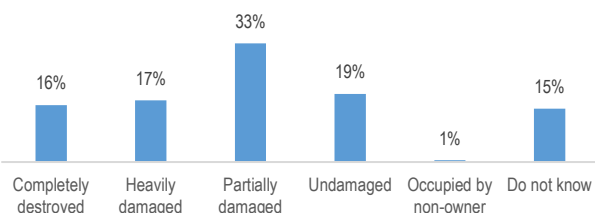
Are you currently planning on returning to your area of origin?



Are you currently planning on returning to your area of origin (AoO)? By governorate of origin²

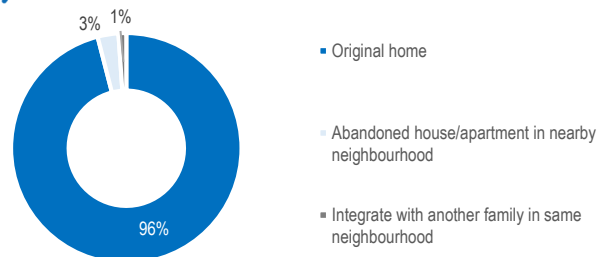


What is the condition of your house in your area of origin?

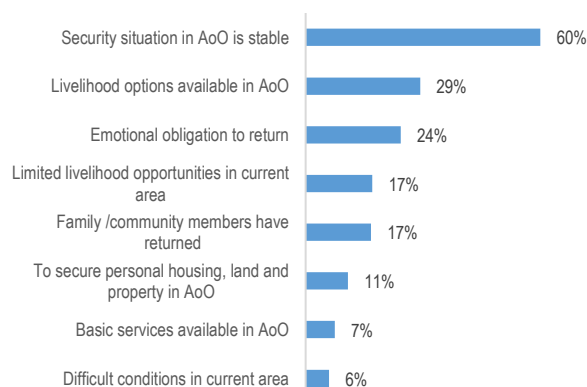


Planning to return to area of origin

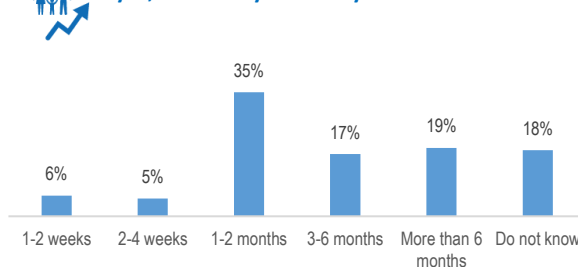
If yes, will you be going to your original home in your area of origin or will you live somewhere else?



If yes, what are the main reasons for why you would like to return to your area of origin?³

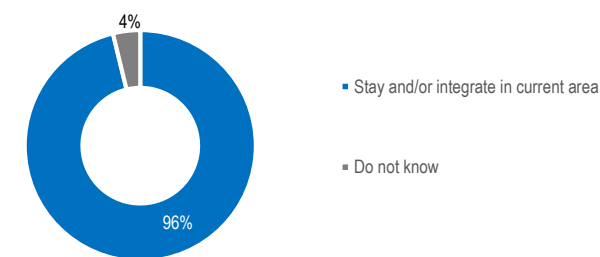


If yes, when do you think you will return?

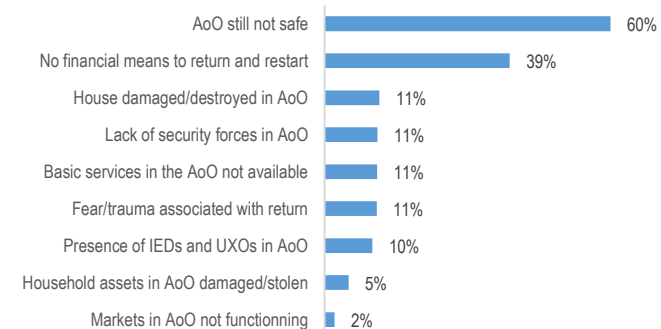


Not planning to return to area of origin

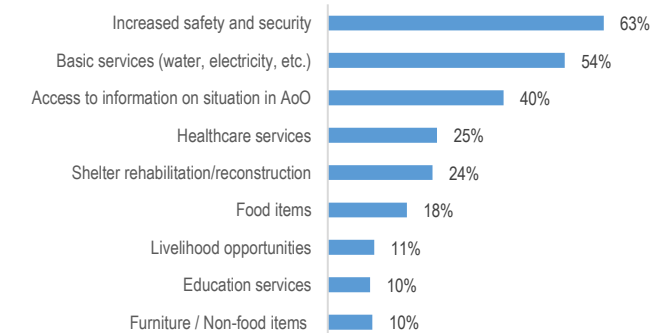
If not planning to return to your area of origin, where will you go?



If no, why can you not return to your area of origin (AoO)?^{3,4}



If it were possible, what are the main needs you or your family require to return in a safe and dignified manner to your area of origin?³



¹ A random GPS sampling technique was applied in each camp, resulting in a 95% confidence level and a 10% margin of error at camp level, as well as a 95% confidence level and a 3% margin of error at the subnational level presented in this factsheet.

² Results from Baghdad governorate are not presented as only 3 households reported originating from this governorate.

³ Respondents could select multiple response options.

⁴ IEDs= Improvised Explosive Devices; UXOs= Unexploded Ordnance.