



UN House Site Profile

Juba County, Central Equatoria State, South Sudan

Summary

UN House is an UNMISS peacekeeping base in Juba. The base hosts 3 Protection of Civilians (PoC) Sites, which house a total of 28,528 displaced persons. The overwhelming majority of Internally Displaced Persons (IDPs) are from the Nuer ethnic group with a small number of Foreign Nationals also residing in the base.

PoC1 was the first site where IDPs fled for safety during the initial days of the crisis in December 2013. The site set up was spontaneous, as people rushed in. As an unplanned site, PoC1 has faced many challenges related to insufficient space, overcrowding and poor drainage. There is limited available space for recreation or community facilities.

PoC2 is the smallest site inside UN House and its residents are all foreign nationals from Somalia, Ethiopia, Eritrea, and Darfur. The majority of the foreign nationals are currently undergoing Refugee Status Determination (RSD), led by UNHCR.

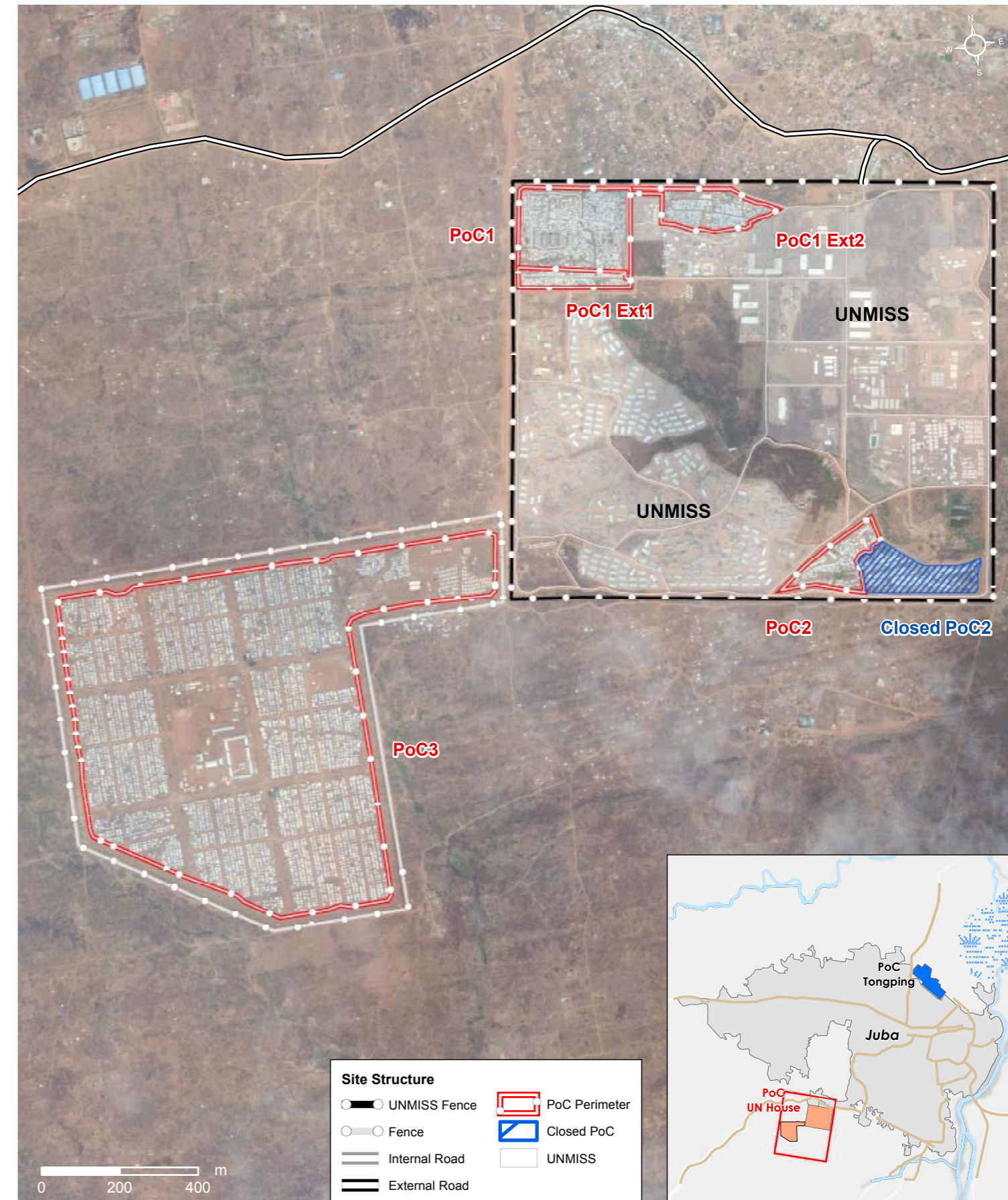
PoC3 is located outside the UN base itself, on land annexed in 2014. From its inception, PoC3 was designed to host IDPs who were relocated from the PoC site in the UNMISS Tongping base across Juba. It is a planned site, structured into blocks and zones with wide access roads dividing up the camp which helps with service provision. A specific zone is designated for NGO and community activities.

Location Map



UN House Site Map

Lat: 4.815111 DD Long: 31.54108 DD



Demographic

PoC 1 = 7,434 individuals

51.1% male / 48.9% female

0.4% | Over 60 | 0.4%

22.6% | 18 - 60 | 21%

5.1% | 12 - 17 | 4.3%

8.5% | 6 - 11 | 8.5%

14.5% | 0 - 5 | 14.7%

PoC 2 = 578 individuals

73.7% male / 26.3% female

0.3% | Over 60 | 0%

66.5% | 18 - 60 | 21.5%

0.5% | 12 - 17 | 0.3%

1% | 6 - 11 | 0.5%

5.4% | 0 - 5 | 4%

PoC 3 = 20,516 individuals

52.5% male / 47.5% female

0.5% | Over 60 | 0.5%

27.3% | 18 - 60 | 22.2%

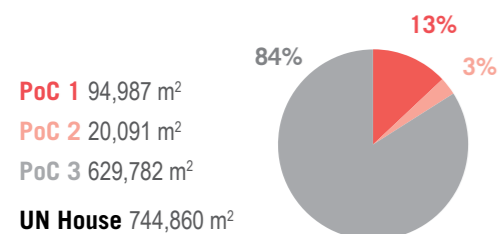
5% | 12 - 17 | 4.7%

7.3% | 6 - 11 | 8.2%

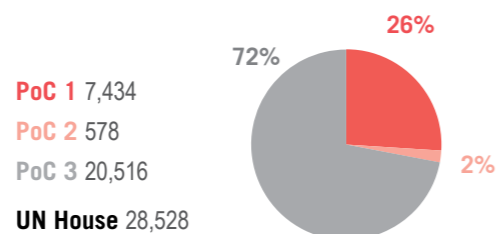
12.4% | 0 - 5 | 11.9%

Statistics

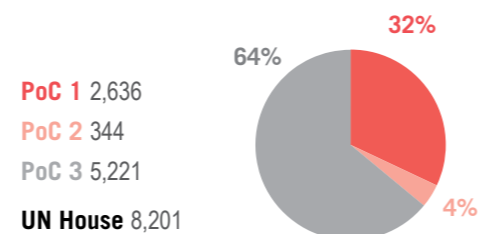
Site Area (m²)



Population



Number of Shelters



Sectoral Highlights

		Target*	PoC 1	PoC 2	PoC 3
CCCM	Average open area per person	min. 30m ²	12.7m ² ●	34.7m ² ●	30.7m ² ●
	Litres of water available per person per day	min. 15L	16L ●	17L ●	17L ●
	# of persons per latrine	max. 20	67 ●	34 ●	27 ●
Water Sanitation	# of persons per shower	max. 20	119 ●	58 ●	108 ●
	% households provided with a shelter (official structures) on arrival	100%	n/a ●	100% ●	100% ●
Shelter	Average covered space per person**	4.2m ²	5.3m ² ●	9.5m ² ●	5.3m ² ●
	Average number of individuals per tent	max 5	2.8 ●	1.6 ●	3.9 ●
Health	Health services are available on-site or within walking distance	Yes	Yes ●	Yes ●	Yes ●

*Targets are based on minimum standards agreed with the CCCM Cluster ● Target reached, ● Target more than 50% reached, ● Target less than 50% or not at all reached. ● No data