



UN House PoC 3 Site Profile

Juba County, Central Equatoria State, South Sudan

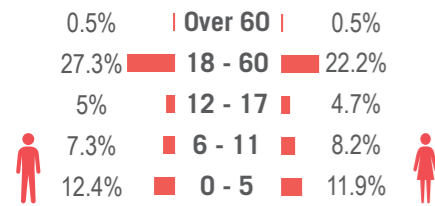
Summary

PoC 3 is the largest of three PoCs at the UN House site in Juba. UN House site was established in December 2013.

Demographic data was provided by IOM (as of 20/04/2015), spatial data was provided by REACH (as of 28/04/2015), shelter data was provided by NRC (as of 06/05/2015) all other data provided by camp management (as of 06/05/2015).

Demographics

52.5% male / 47.5% female



Implementing Agencies

- EDUCATION** Intersos, NRC, DMI
- FOOD** World Vision
- HEALTH** IMC, Concern (Nutrition), Magna
- NFI** Vacant
- PROTECTION** IRC, Handicap Int., Help Age, TDH, Nonviolent Peaceforce, PACT, SFCG
- SHELTER** Vacant
- WASH** ACTED, Solidarités International

Sectoral Overview

		Target*	Achieved	
Education	% of children aged 6-11 enrolled in primary school	100%	88%	●
	% of children aged 12-17 enrolled in secondary school	100%	n/a	●
Food	% households received food distribution (GFD) in past month	100%	70%	●
	Blanket Supplementary Feeding Programme (BSFP) for young children is in place	Yes	Yes	●
NFIs	% of households accessed NFI assistance since the onset of the crisis	100%	n/a	●
Health	Health services are available on-site or within walking distance	Yes	Yes	●
CCCM	Average open area per person	min. 30m ²	30.7m ²	●
Protection	% registered IDPs	100%	100%	●
	% households provided with a shelter (official structures) on arrival	100%	100%	●
Shelter	Average covered space per person**	4.2m ²	5.3m ²	●
	Average number of individuals per tent	max 5	3.9	●
	Litres of water available per person per day	min. 15L	17L	●
Water Sanitation	# of persons per latrine (m/f)	max. 20	27	●
	# of persons per shower (m/f)	max. 20	108	●

*Targets are based on minimum standards agreed with the CCCM Cluster ● Target reached, ● Target more than 50% reached, ● Target less than 50% or not at all reached. ● No data
**PoC3 shelters were designed to be 21 m²

Site Overview

- Site management:** ACTED
- Site population:** 20,516
- Accommodation:** 5,221 official structures and between 500 - 1,000 unauthorized structures
- Planned capacity:** 5,350 structures
- Site area:** 629,782 m²
- IDP origin:** The majority of IDPs arrived from Juba or elsewhere in Central Equatoria State

CCCM Mechanisms

The following structures are in place:

- Site management committee**
- Chiefs committee**
- Other committees**
 - Women & Youth
 - Religious leaders
 - Community Watch Group

Key Developments

Relocation of 1,187 IDPs from PoC 2 into PoC 3 is now complete. An additional 310 shelters have been built in PoC 3 following the relocation.

The drainage situation has presented new challenges with the onset of the rainy season. In response to concerns related to drainage and latrines, WASH actors have begun excavation in the East side of the PoC between Block C and D and are continuing to repair latrines.

700 households were randomly selected for a training on cholera preparedness.

For the past 3 months, households have received 50% of a full ration (7.5 kg staples cereals, 3 kg pulses, 1.8 L oil). The latest round of General Food Distribution (GFD) started on 23rd of June and will consist of a first week of food distribution and a second week of vouchers.

Particular concerns have been reported in relation to funding gaps for implementing partners in Shelter and Protection.

Location Map



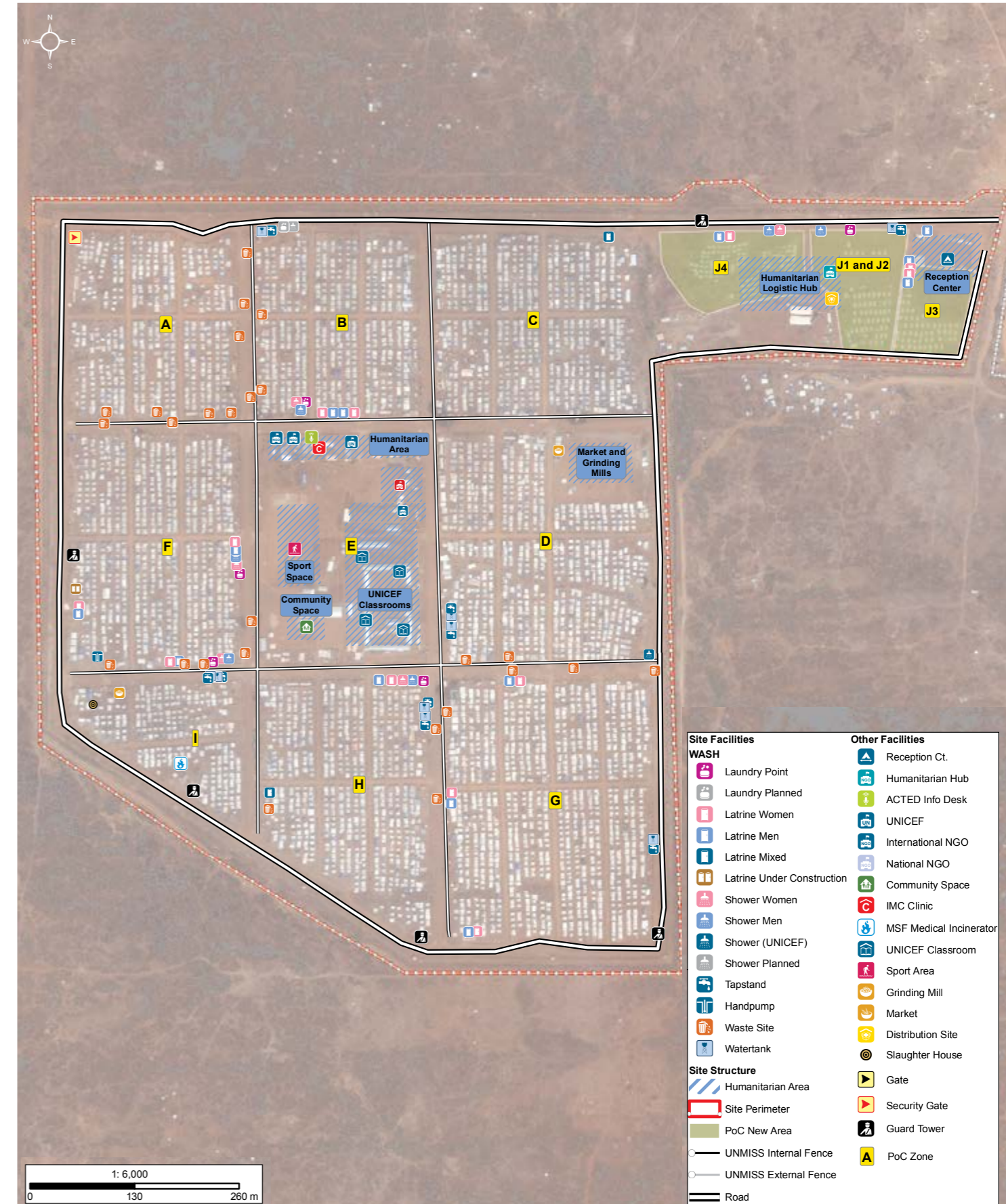
Reported Priority Needs

Priority needs were reported and ranked by camp management as:

- 1 Water**
- 2 Sanitation**
- 3 Food**

UN House PoC 3 Site Map

Lat: 4.810136 DD Long: 31.528955 DD



- | Site Facilities | Other Facilities |
|----------------------------|-------------------------|
| WASH | Reception Ct. |
| Laundry Point | Humanitarian Hub |
| Laundry Planned | ACTED Info Desk |
| Latrine Women | UNICEF |
| Latrine Men | International NGO |
| Latrine Mixed | National NGO |
| Latrine Under Construction | Community Space |
| Shower Women | IMC Clinic |
| Shower Men | MSF Medical Incinerator |
| Shower (UNICEF) | UNICEF Classroom |
| Shower Planned | Sport Area |
| Tapstand | Grinding Mill |
| Handpump | Market |
| Waste Site | Distribution Site |
| Watertank | Slaughter House |
| Site Structure | Gate |
| Humanitarian Area | Security Gate |
| Site Perimeter | Guard Tower |
| PoC New Area | PoC Zone |
| UNMISS Internal Fence | |
| UNMISS External Fence | |
| Road | |