



UN House PoC 2 Site Profile

Juba County, Central Equatoria State, South Sudan

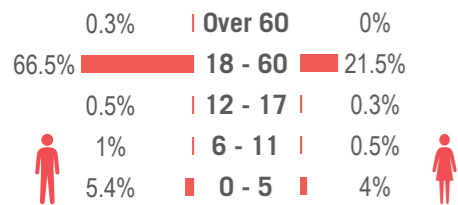
Summary

PoC 2 (Protection of Civilian) is the smallest of three PoCs at the UN House site in Juba. All the displaced persons in PoC2 are foreign nationals, mostly from Somalia, Eritrea, Ethiopia and Darfur. UN House site was established in December 2013.

Demographic data was provided by IOM (06/06/2015), spatial data was provided by REACH (as of 28/04/2015), all other data provided by camp management (as of 29/06/2015).

Demographics

73.7% male / 26.3% female



Implementing Agencies

- EDUCATION** IBIS
- FOOD** Concern
- HEALTH** IMC, Concern (Nutrition), Magna
- NFI** Vacant
- PROTECTION** IRC, Handicap Int., TDH, Non Violent Peaceforce
- SHELTER** Vacant
- WASH** Solidarités International, These

Sectoral Overview

		Target*	Achieved	
Education	% of children aged 6-11 enrolled in primary school	100%	100%	●
	% of children aged 12-17 enrolled in secondary school	100%	n/a	●
Food	% households received food distribution (GFD) in past month	100%	100%	●
	Blanket Supplementary Feeding Programme (BSFP) for young children is in place	Yes	Yes	●
NFIs	% of households accessed NFI assistance since the onset of the crisis	100%	n/a	●
Health	Health services are available on-site or within walking distance	Yes	Yes	●
CCCM	Average open area per person	min. 30m ²	34.7m ²	●
Protection	% registered IDPs	100%	100%	●
Shelter	% households provided with a shelter (official structures) on arrival	100%	100%	●
	Average covered space per person**	4.2m ²	9.5m ²	●
	Average number of individuals per tent	max 5	1.6	●
Water Sanitation	Litres of water available per person per day	min. 15L	17L	●
	# of persons per latrine (m/f)	max. 20	34	●
	# of persons per shower (m/f)	max. 20	58	●

*Targets are based on minimum standards agreed with the CCCM Cluster ● Target reached , ● Target more than 50% reached, ● Target less than 50% or not at all reached. ● No data

**PoC2 shelters were designed to be 16 m²

Site Overview

- Site management:** ACTED
- Site population:** 578
- Accommodation:** 344 structures
- Planned capacity:** 350 structures
- Site area:** 20,091 m²
- Origin of displaced persons:** PoC2 is made up of foreign nationals originating mostly from Eritrea, Somalia, Ethiopia and Sudan.

CCCM Mechanisms

The following structures are in place:

- Site management committee
- National community leaders
- Other committees
 - Women & Youth
 - Religious leaders
 - Community Watch Group

Key Developments

Relocation of 1,187 South Sudanese IDPs from PoC 2 into PoC 3 was completed in May 2015. The remaining displaced persons in PoC2 are foreign nationals, mainly originating from Eritrea (221), Somalia (181), Ethiopia (153) and Sudan (21).

The majority of the foreign nationals are currently undergoing a Refugee Status Determination (RSD) process, led by UNHCR. The RSD process is expected to be completed by September 2015. For those who receive refugee status, UNHCR will provide options for them to relocate to other refugee camps inside South Sudan, or they will have the option to become urban refugees in Juba.

Location Map



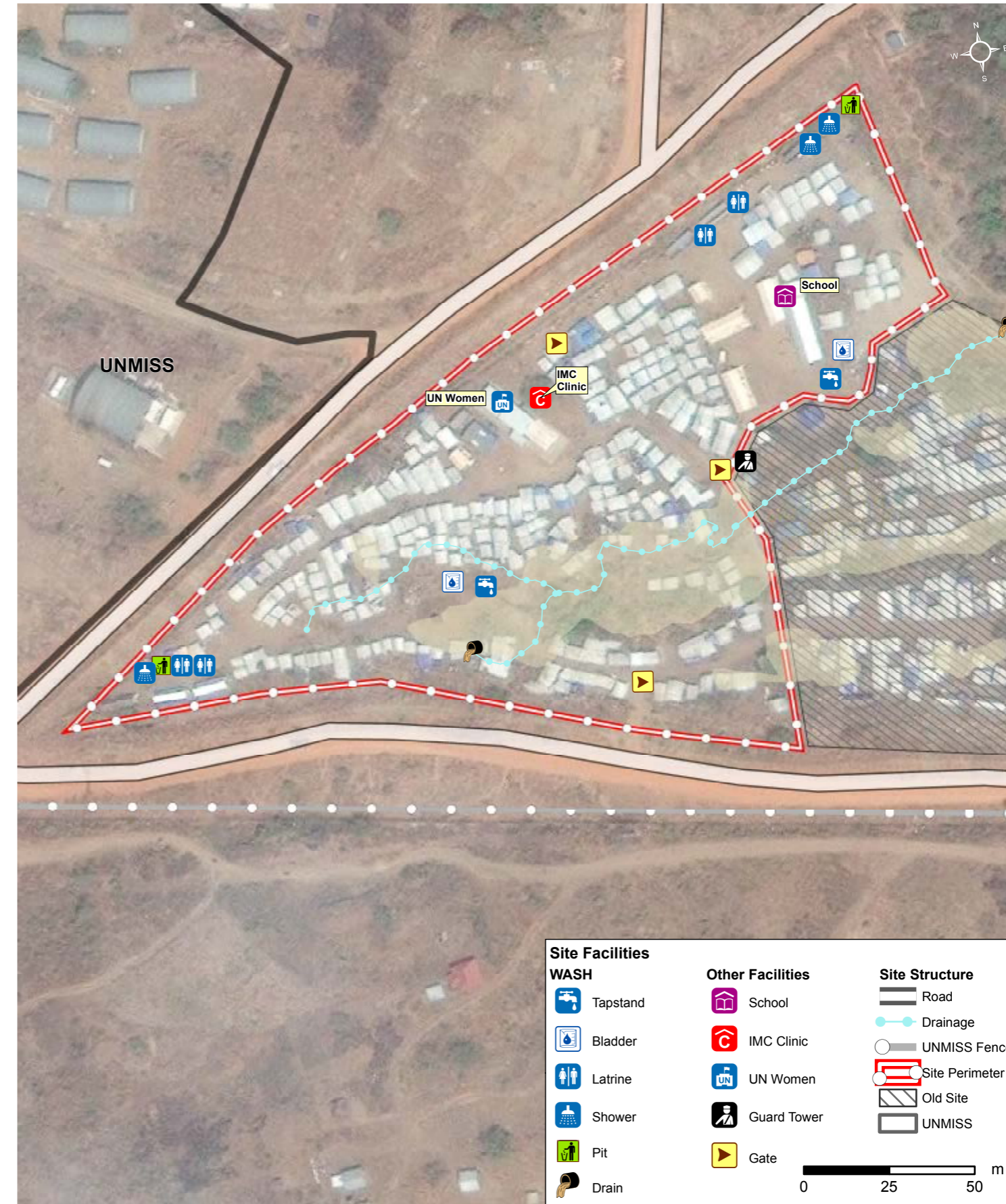
Reported Priority Needs

Priority needs were reported and ranked by camp management as:

- Water
- Food
- Education

UN House PoC 2 Site Map

Lat: 4.811148 DD Long: 31.542689 DD



Site Facilities

- WASH**
 - Tapstand
 - Bladder
 - Latrine
 - Shower
 - Pit
 - Drain
- Other Facilities**
 - School
 - IMC Clinic
 - UN Women
 - Guard Tower
 - Gate
- Site Structure**
 - Road
 - Drainage
 - UNMISS Fence
 - Site Perimeter
 - Old Site
 - UNMISS