



# UN House PoC 1 Site Profile

Juba County, Central Equatoria State, South Sudan

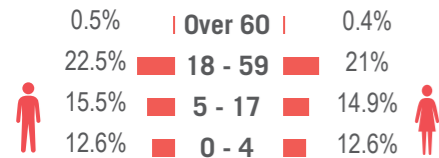
## Summary

PoC 1 was the first established site of three PoCs at the UN House site in Juba. UN House site was established in December 2013.

Demographic data was provided by IOM (as of 06/06/2015), spatial data was provided by REACH (as of 28/04/2015), shelter data was provided by Concern (as of 30/05/2015) all other data provided by camp management (as of 20/05/2015).

## Demographics

51.1% male / 48.9% female



## Implementing Agencies

- EDUCATION**: Intersos, NRC, DMI
- FOOD**: Concern
- HEALTH**: IMC, Handicap International, Magna, Concern (Nutrition)
- NFI**: Vacant
- PROTECTION**: IRC, Nonviolent Peaceforce, REF UNITED, UN Women
- SHELTER**: LCED
- WASH**: Solidarités International, Theso

## Sectoral Overview

		Target*	Achieved	
<b>Education</b>	% of children aged 6-11 enrolled in primary school	100%	61%	●
	% of children aged 12-17 enrolled in secondary school	100%	n/a	●
<b>Food</b>	% households received food distribution (GFD) in past month	100%	80%	●
<b>NFIs</b>	% of households accessed NFI assistance since the onset of the crisis	100%	n/a	●
<b>Health</b>	Health services are available on-site or within walking distance	Yes	Yes	●
	Monthly Blanket Supplementary Feeding Programme (BSFP) for children under 5 is in place	Yes	No	●
<b>CCCM</b>	Average open area per person	min. 30m <sup>2</sup>	12.7m <sup>2</sup>	●
<b>Protection</b>	% registered IDPs	100%	100%	●
	% households provided with a shelter (official structures) on arrival	100%	n/a	●
	Average covered space per person	4.2m <sup>2</sup>	5.3m <sup>2</sup>	●
<b>Water Sanitation</b>	Average number of individuals per tent	max 5	2.8	●
	Litres of water available per person per day	min. 15L	16L	●
	# of persons per latrine (m/f)	max. 20	67	●
	# of persons per shower (m/f)	max. 20	119	●

\*Targets are based on minimum standards agreed with the CCCM Cluster ● Target reached, ● Target more than 50% reached, ● Target less than 50% or not at all reached. ● No data  
PoC1 shelters averagely measure 15m<sup>2</sup>

## Site Overview

- Site management:** ACTED
- Site population:** 7,434
- Accommodation:** 2,636 structures
- Planned capacity:** 3,148 structures
- Site area:** 94,987 m<sup>2</sup>
- IDP origin:** The majority of IDPs arrived from Juba or elsewhere in Central Equatoria State

## Location Map



## CCCM Mechanisms

The following structures are in place:

- Site management committee**
- Block Leaders**
- Other committees**  
Women & Youth  
Religious leaders  
Community Watch Group

## Key Developments

According to latest registration data from June, the IDP population of PoC1 has decreased by 5,866 individuals since the last registration exercise in August 2014. However, new arrivals to the PoC have also been recorded in the past month.

The past round of General Food Distribution (GFD) took place during the second week of June and it included vouchers for one day.

Other health activities are ongoing including screening for malnutrition and a Handicap International one month training resulting in the selection of 6 attendees from PoC 1 and 3 to work with the community providing counselling.

Drafting of bylaws is ongoing with the community. Various committees in the site are reviewing a draft document, and a process of debate and revision will follow.

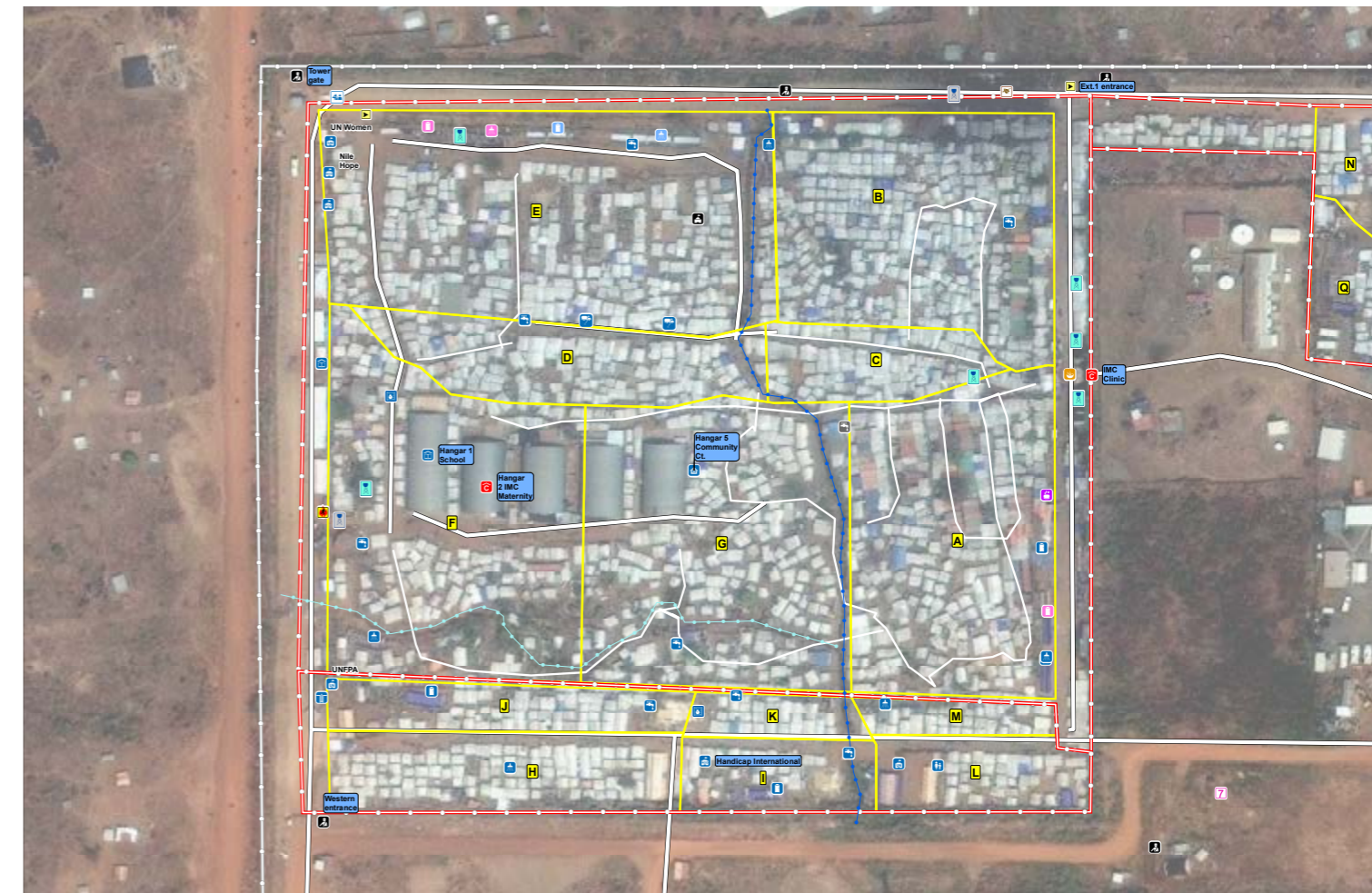
## Reported Priority Needs

Priority needs were reported and ranked by camp management as:

- Food**
- Shelter**
- Medical Assistance**

## UN House PoC 1 Site Map

Lat: 4.819641 DD Long: 31.538089 DD



**Site Structure**

- Site Sector
- PoC Perimeter
- UNMISS Fence

**Roads**

- Road
- Main Drain
- Secondary Drain

**Site Facilities WASH**

- Shower
- Bladder
- Borehole
- Tapstand
- Tapstand (Not working)
- Watertrucking
- Watertank
- Watertank 45

**Other Facilities**

- Clinic
- Child Friendly Space
- School
- Community Centre
- Distribution Site
- NGO
- UN

**Site Structure**

- Protection Agency
- Market
- Charcoal
- SSRC
- UNPOL
- Guard Tower
- Site Entrance
- Emergency Gate

**Site Facilities**

- Laundry Pt.
- Latrine (Women)
- Latrine (Men)
- Latrine
- Shower (Women)
- Shower (Men)

**Scale:** 1:2,500  
0 30 60 m